

Specifications

MODEL	UNIT	EH-320 / EH-320apc
TRAVEL		
X Axis Travel	mm	300
Y Axis Travel	mm	320
Z Axis Travel	mm	270
B Axis Roiation Angle	degree	360°
Spindle Center To Table Surface	mm	50 - 320
Spindle Nose To Table Center	mm	120 - 390
Table Surface To Floor	mm	1160
TABLE		
Table Dimension	mm	Ø 350 / 320 x 320
Max.loading Weight	kg	300
T-slots (Width×No.×Pitch)	-	24 - M12 x P1.75
Min Indexing Angle	degree	90° (4d position)/ 1° (1/1000°)
SPINDLE		
Spindle Speed	min ⁻¹	10000
Spindle Nose	-	7/24 Taper No.40
Spindle Motor	Kw	5.5/7.5
FEEDRATE		
Rapid Traverse X/Y/Z Axis	m/min	48
Cutting Feedrate	m/min	20
ATC		
No. of Tools	-	16
Pull Stud	-	P40T-1(45°0)
Max. Tool Weight	Kg	8
Max. Tool Length	mm	210
Max. Tool Diameter	mm	Ø 70
Max. Tool Diameter (No Adjacent Tool)	mm	Ø 120
Tool Changing Time (Tool To Tool)	sec	1.9 sec (60HZ)
Tool Changer	-	Arm Type
Number of Pallets	-	1 / 2
Method of Pallet Change	-	- / ROTARY
Pallet Change Time	sec	- / 8 sec (60HZ)
Floor Space(WxD)	mm	1,600 x 2,900 / 1,600 x 3,400(STD.)
Machine Weight	Kg	2,800 / 3,500
Max. Machine Height	mm	2,500
Power Capacity	KVA	35
Air Source	Bar	6~8

● : Standard · ○ : Option · × : No available

STANDARD ACCESSORIES	EH-320	EH-320apc	OPTIONAL ACCESSORIES	EH-320	EH-320apc
BT40-16T ATC (Arm type)	●	●	Coolant through spindle 20μ/30bar	○	○
Direct drive spindle BT40-10000rpm	●	●	Coolant through spindle 20μ/20bar	○	○
1/1000° Rotary table by servo	○	○	Direct drive spindle #30 / 15K(20k) rpm	○	○
Door interlock	●	●	Rear side scrape type chip conveyor & bucket	○	○
1 degree servo index table	○	●	Rear side chain type chip conveyor & bucket	○	○
4 position hydraulic index table	●	×	BT40-24T ATC	○	○
Dual chip screws (rear side)	●	●	BT30-30T ATC	○	○
RS-232 plug	●	●	BT30-20T ATC (Arm type)	○	○
Leveling screw and pad	●	○	1/1000° Rotary table by servo	○	○
Fixturing interface	●	●	NC4 Auto tool length measurement and broken detection	○	○
Heat exchanger	●	●	8-lines fixturing interface	×	○
Auto pallet changer	×	●	Oil skimmer (Arm type)	○	○
Oil skimmer	●	●	OMP60 Workpiece measurement	○	○
Auto lube system	●	●	Coolant gun with valve	○	○
Spindle air blast	●	●	Auto power off	○	○
Air gun interface	●	●	3 axis linear scales	○	○
Chip tank	●	●	Oil cooler	○	○
3-color signal	●	●	Oil mist collector	○	○
Rigid tapping	●	●	CE regulation	○	○
Coolant shower	●	●			
Work light	●	●			



HEADQUARTERS
No. 186, Yong Ji Rd., Taipei, Taiwan.
Tel: +886-2-2763-9696
Fax: +886-2-2768-0636/3739
www.ffg-tw.com
E-mail: chairom@fairfriend.com.tw



FEELER MACHINE TOOLS DIVISION
No. 12, Jingke Rd., Nantun Dist., Taichung City, Taiwan
Tel: +886-4-2359-4075 (MAIN), 2359-4845 (SALES DEP.)
Fax: +886-4-2359-4873
www.feeler.com
E-mail: sales@feeler.com

www.feeler.com



EH SERIES

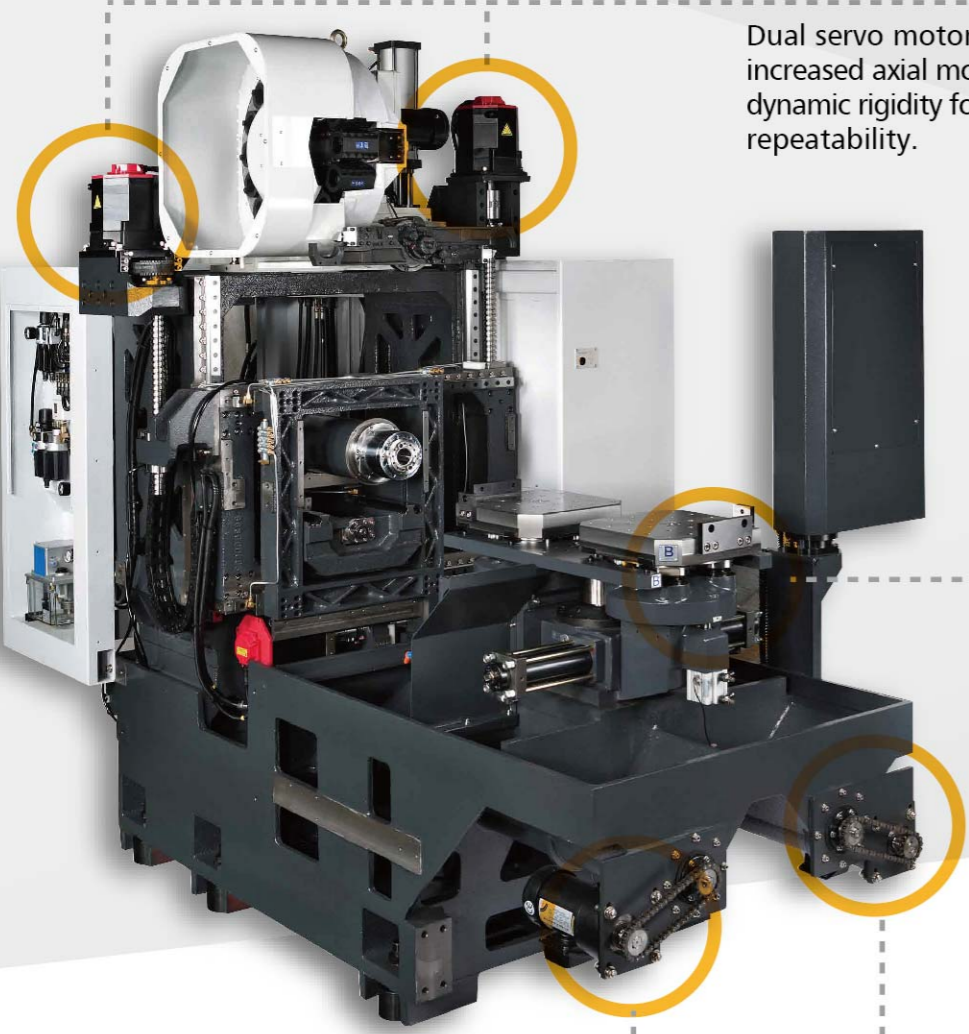
Horizontal Machining Center

15.12.1000-S601000001

Dual Transmission on Y Axis

A

Dual servo motors and ball screws on the Y axis provide increased axial movement balance. It features best possible dynamic rigidity for excellent dynamic stability and machining repeatability.



B Axis

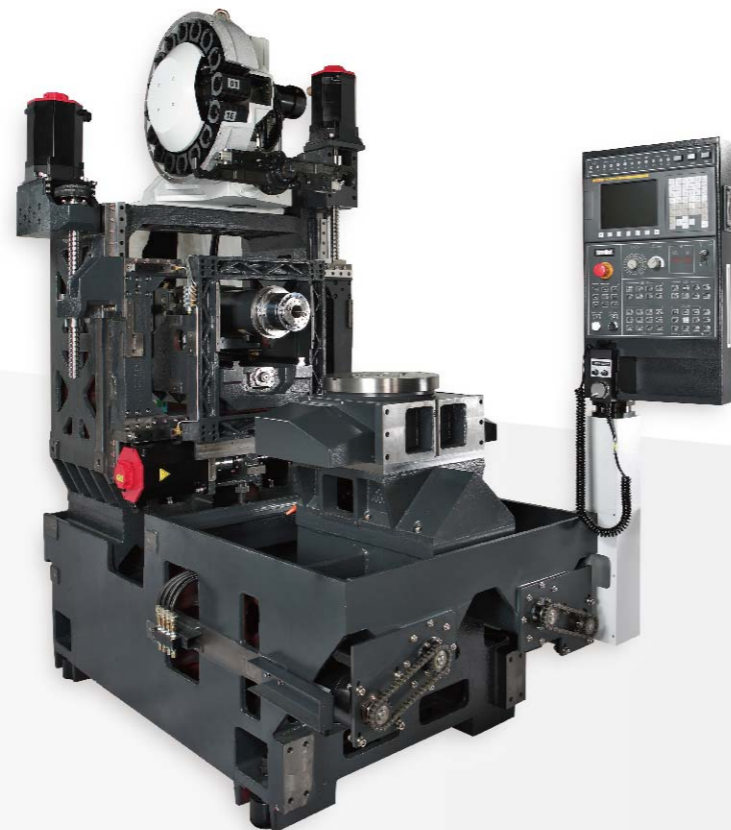
B

The B axis is mounted onto the base construction, which features high positioning accuracy and rigidity.

Dual Chip Screws

C

The design of dual chip screws exhaust chips efficiently.



(Single Pallet Type)

EH-320apc

HORIZONTAL MACHINING CENTER

FEATURES :

Double-wall, rib-reinforced frame on box-in-box structural design along with BT-40 direct drive spindle achieve stability and efficiency in the meantime-defining a new high standard for compact horizontal machining centers.



(APC type)

Machining Example



Oil Cooling Parts

Show Pieces

Notebook Shell

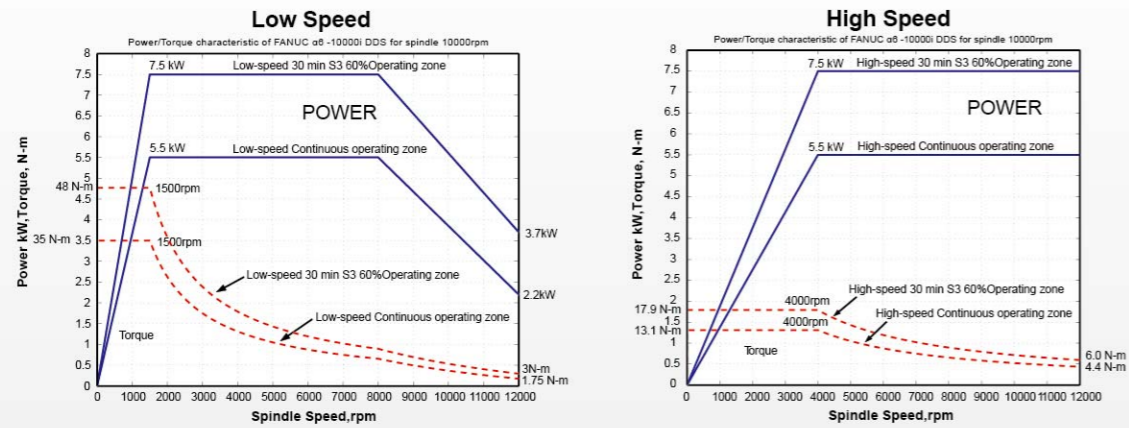
Applications:

- Motorcycle Parts
- Mold Making
- 3C Products
- Mass production

Direct Drive Spindle (Std.)

BT-40 direct drive spindle is powered by $\alpha 6$ motor of high-low dual speed, provides high and low running speeds for high chip removal rate and rigid tapping.

Spindle Motor Torque Chart



Material Aluminum (A5052)
Tool M1 x 0.25 x 3mm
 (Continuous quick tapping for 480 times)
Spindle speed 3,000 rpm

Material Aluminum (A5052)
Tool $\varnothing 80$ end face milling tool
Spindle speed 4,000 rpm
Removal rate 648 cm² / min

Quick Chip Removal And Drain Back(Std.)

Base is designed with big inclination to concentrate both sides chip drop, equipped with coolant flushing system and internal chip screws to remove cutting heat source quickly and more efficient drain back.



Online Measurements

Workpiece measurement (OMP60) (OPT), Auto tool length measurement and broken detection (NC4) (OPT) are available, preventing machining results from inaccuracy due to tool worn-out and damage.



Reserved Outlets For Jigs and Fixtures (Std.)

For single pallet type, 4 pneumatic/hydraulic outlets are reserved for jigs and fixtures.
 * For APC, reserved outlets are available as optional and up to 8 outlets as maximum.

Swift ATC System (Std.)

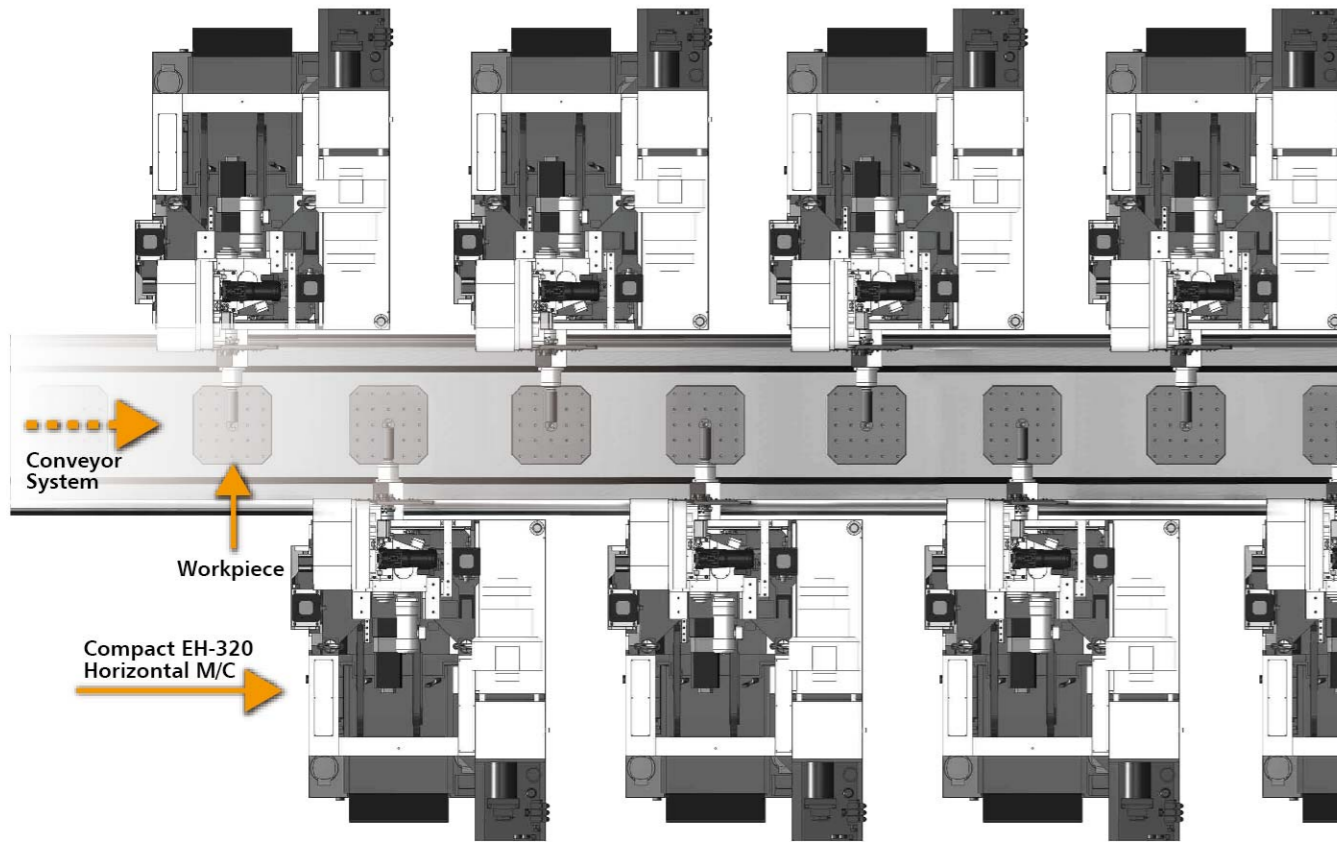
An encoder is applied on the arm-type cam device for accurate angle positioning and providing accurate signal to PLC.

Box-in-box structural design achieves remarkable dynamic rigidity therefore providing outstanding and unmatched machining stability and accuracy.

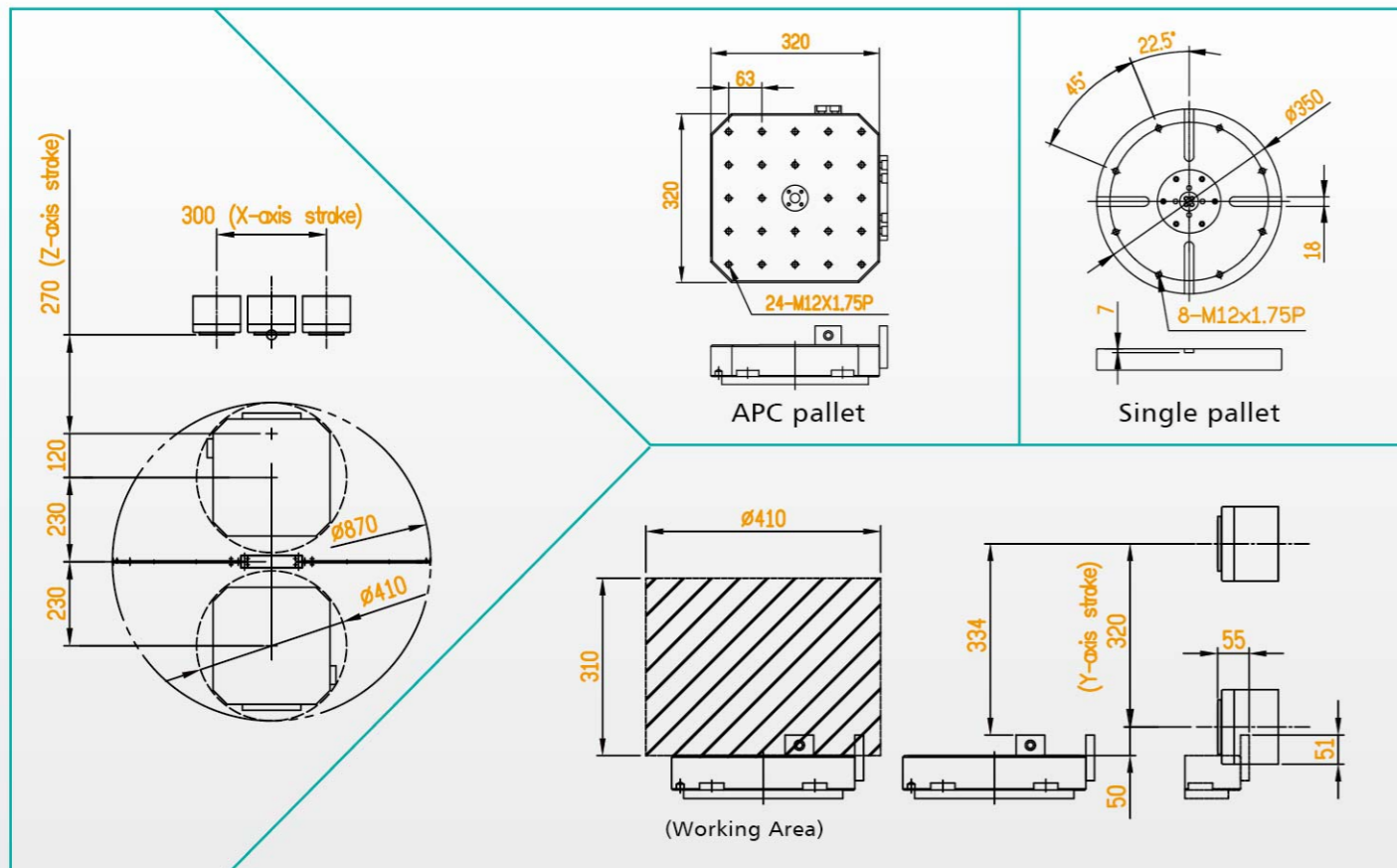
Flexible Lineup for Optimal Productivity

Space-saving, Flexible, Optimal Productivity

To meet various production requirements, and optimal productivity, the EH-320 can be installed for space-effective lineup with a conveyor.

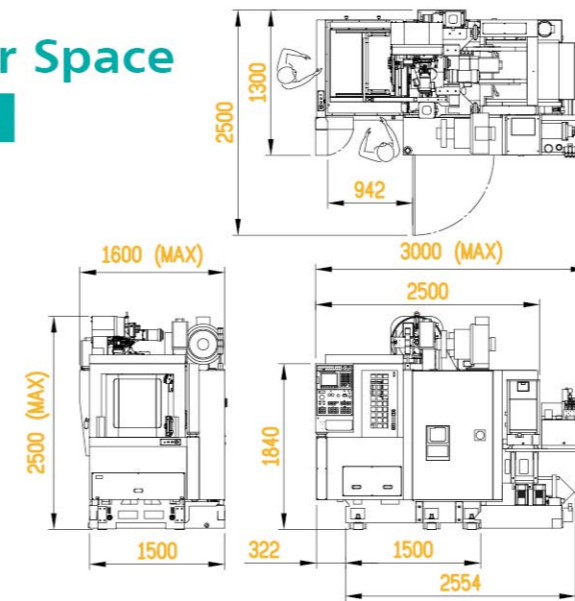


APC Dimensions

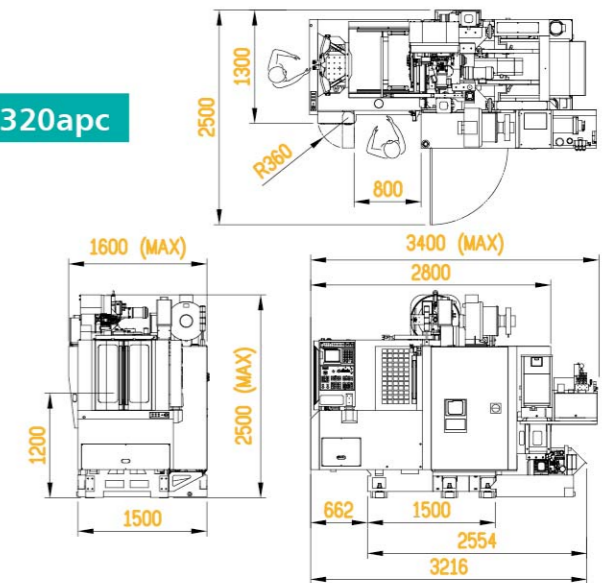


Floor Space

EH320

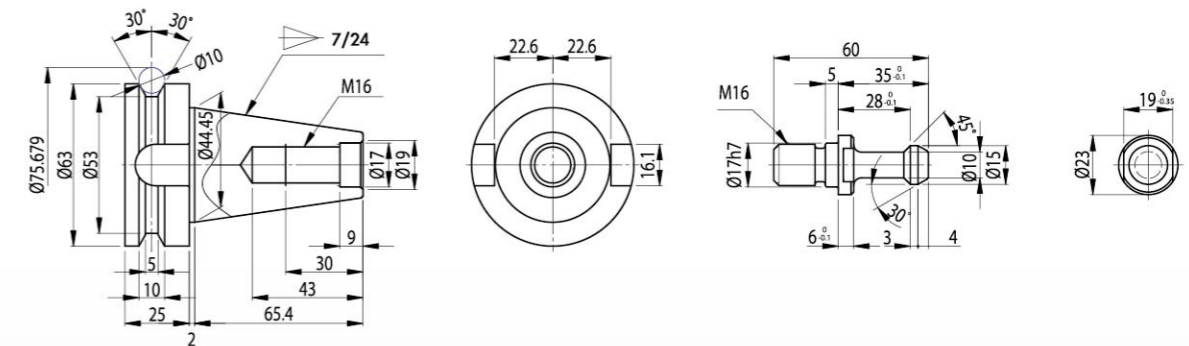


EH320apc

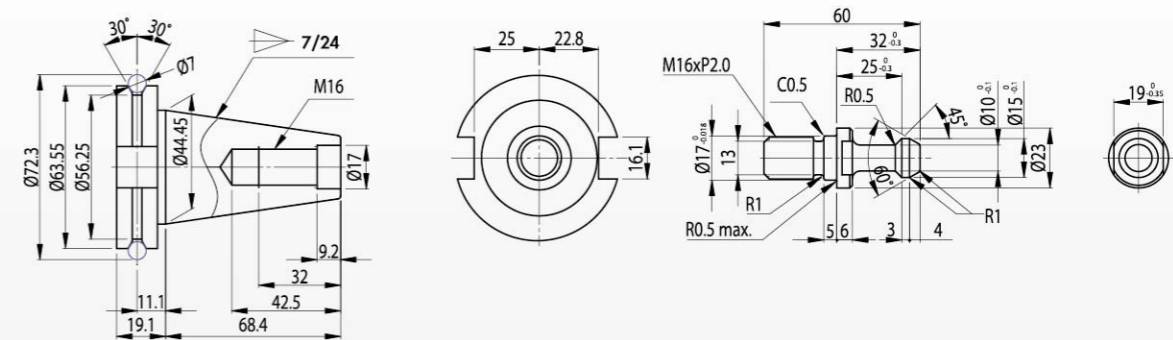


TOOL SHANK SPECIFICATIONS

BT-40



CAT-40



DIN-40 DIN69871 + DIN69872 PULL STUD

