



The valves are activated after the cam is driven from one or the other side of the valve. The valve is also suitable for smooth and slow changes, when pressing on the roller results in smooth flow regulation. In the middle of the roller stroke, the air flow from the inlet is closed (it does not pass to outlet 2 or outlet 4). In addition to the standard version, a roller with an extended spring-loaded stroke is also available, where after activating the valve, the roller can be pressed in by another 11 mm without damaging the distributor. This variant can be used advantageously with cams that do not drive precisely.



Valves series LV7 contains spool and sleeve assembly, which guarantee long lifetime of valve.

Series	LV7
Ports	G1/4"
Flow capacity [NI/min]	1700
Working pressure [MPa]	vacuum to 2,1
Actuating force [N]	min. 20, max. 200
Temperature range [°C]	medium temperature max. 50, ambient temperature -20 to +50
Weight [kg]	0,66

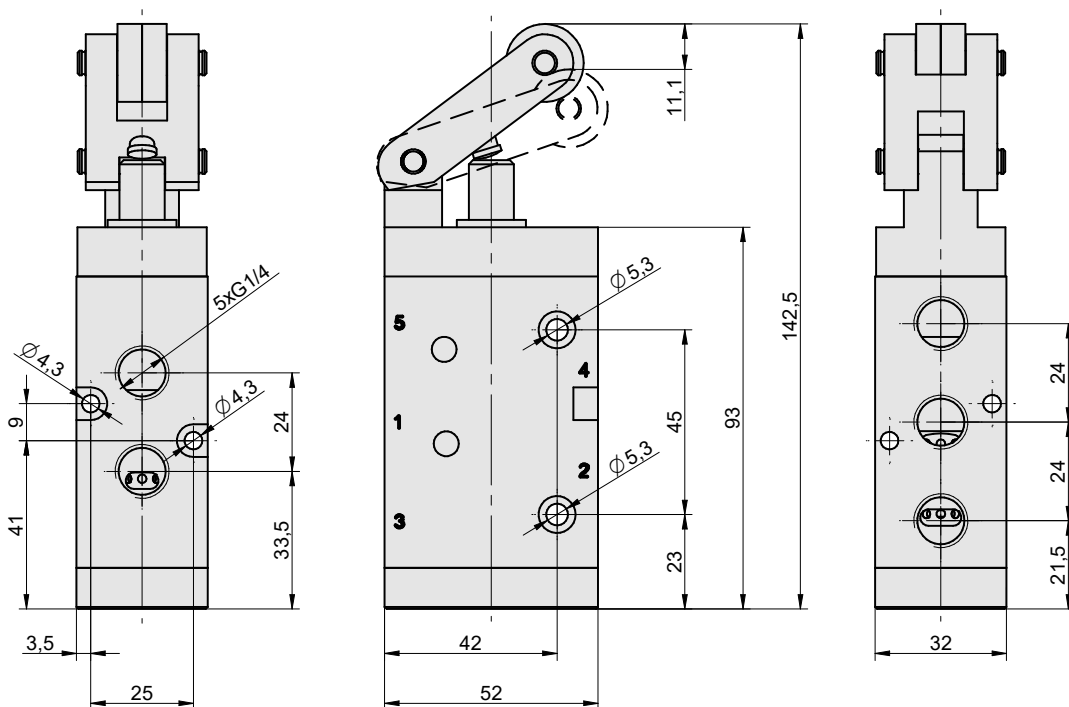
Order codes

Type	Order code
Valve 5/2	2000 2531 8000 0000
Valve 5/2 with extended stroke	2000 2566 8000 0000



To fully activate the valve, the roller must be pressed in by 11 mm. In the extended stroke version, the roller can be pressed in by another 11 mm without affecting the function.

Dimensions



Construction / materials

- body - aluminium alloy
- caps - aluminium alloy, technopolymer, nickel plated steel
- springs - stainless steel
- seals - Viton®
- spool and internal parts - stainless steel
- lever - nickel plated steel
- roller - bearing



For more information about spool and sleeve assembly see page 5-2.

