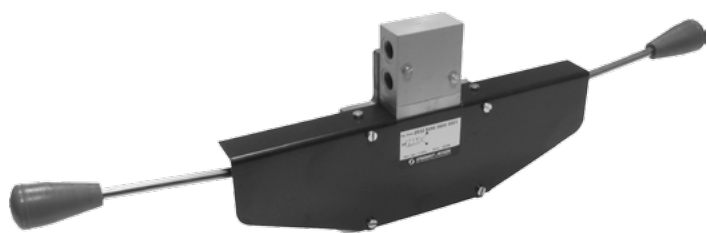


MANUALLY ACTUATED TWO HAND SAFETY VALVES





This safety valve is used in applications, where controlling by two hands at a time is necessary due to safety reasons (presses and etc.). Valve is actuated only when both levers are pressed together. If one lever will be pressed permanently, valve will not be actuated when the second lever will be pressed.

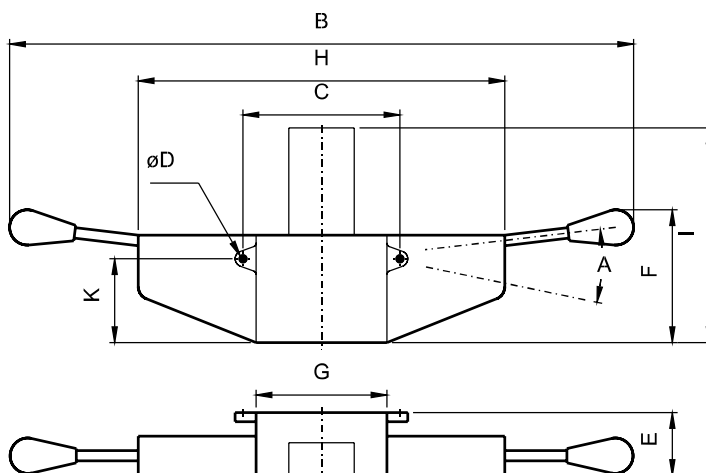
This valve series contains rubber gaskets.

Ports	G1/4"
Flow capacity [Nl/min]	800
Working pressure [MPa]	0.2 to 1.0
The way of actuation	direct
Temperature range [°C]	-20 to +80
Working medium	modified compressed air
Weight [kg]	1.28 for 3/2 function, 1.34 for 5/2 function

Order codes

Ports	G1/4"
Type 3/2 	2532 5090 0600 0001
Type 5/2 	2552 5090 0600 0001

Dimensions



Type	A	B	C	D	E	F	G	H	I	K
3/2	22°	530	118	5.4	48	106	100	280	138	35
5/2	22°	530	118	5.4	48	106	100	280	160	35