



- ISO 15552, VDMA 24562, NF E 49003.1
- DIN ISO 6431, VDMA 24562, NF E 49003.1
- COMPACT

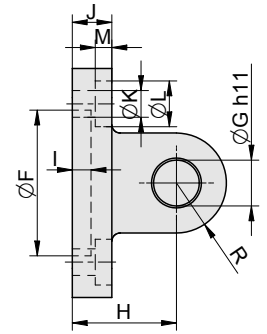
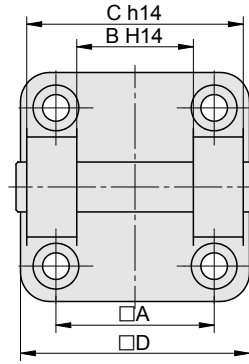
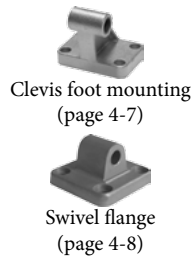
SWIVEL FLANGE FOR CYLINDER

- ISO 15552, VDMA 24562, NF E 49003.1
- DIN ISO 6431, VDMA 24562, NF E 49003.1
- COMPACT

Supply contains:
 1 pc flange
 1 pc pivot pin
 2 pcs retaining rings
 4 pcs screws



i Can be combined with:



Piston Ø	A	B	C	D	F	G	H	I	J	K	L	M	R	Weight	Order codes
32	32.5	26	45	48	30	10	22	4.5	6	6.6	-	-	8.5	0.10	2101 3000 0032 0000
40	38	28	52	55	35	12	25	4.5	6	6.6	-	-	10	0.16	2101 3000 0040 0000
50	46.5	32	60	65	40	12	27	4.3	6.5	9.2	-	-	10	0.26	2101 3000 0050 0000
63	56.5	40	70	75	45	16	32	4.5	6.5	9.2	-	-	12	0.38	2101 3000 0063 0000
80	72	50	90	95	45	16	36	-	11	11	-	-	13	0.72	2101 3000 0080 0000
100	89	60	110	115	55	20	41	-	10	11.2	-	-	16	1.06	2101 3000 0100 0000
125	110	70	130	140	60	25	50	7	19	14	20	9	25	3.90	2101 3000 0125 0000
160	140	90	170	185	65	30	55	7	20	18	26	10	30	7.44	2101 3000 0160 0000
200	175	90	170	235	75	30	60	7	24	18	26	13	30	12.08	2101 3000 0200 0000
250	220	110	200	270	90	40	70	11	25	22	34	14	40	17.55	2101 3000 0250 0000
320	270	120	220	350	110	45	80	11	30	26	46	15	45	31.60	2101 3000 0320 0000
400	350	120	220	430	110	45	90	12	28	26	46	14	53.5	47.00	2101 3000 0400 0000

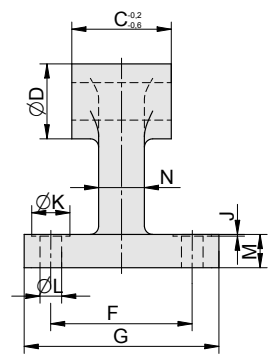
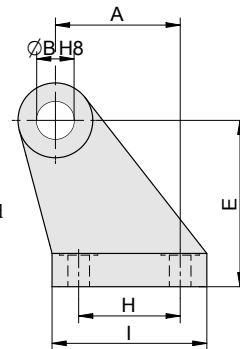
CLEVIS FOOT MOUNTING FOR CYLINDER

- ISO 15552, VDMA 24562, NF E 49003.1
- DIN ISO 6431, VDMA 24562, NF E 49003.1
- COMPACT

Supply contains:
 1 pc clevis



i Can be combined with:



Piston Ø	A	B	C	D	E	F	G	H	I	J	K	L	M	N	Weight	Order codes
32	21	10	26	20	32	38	51	18	31	1	11	6.4	8	10	0.11	2101 3100 0032 0000
40	24	12	28	23	36	41	54	22	35	1	11	6.4	10	12	0.09	2101 3100 0040 0000
50	33	12	31.8	20	45	50	65	30	45	-	-	9	12	15	0.20	2101 3100 0050 0000
63	37	16	39.8	24	50	52	67	35	50	-	-	9.2	12	15	0.28	2101 3100 0063 0000
80	47	16	49.8	26	63	66	86	40	60	-	-	11	14	20	0.47	2101 3100 0080 0000
100	55	20	59.8	32	71	76	93	50	67	-	-	11	15	20	0.60	2101 3100 0100 0000
125	70	25	69.6	50	90	94	124	60	90	3	20	14	20	28	1.10	2101 3100 0125 0000
160	97	30	89.5	60	115	118	156	88	126	4	20	14	25	35	5.20	2101 3100 0160 0000
200	105	30	89.5	60	135	122	162	90	130	2	26	18	30	38	7.60	2101 3100 0200 0000
250	128	40	108.5	80	165	150	200	110	160	4	34	22	35	45	16.20	2101 3100 0250 0000
320	150	45	119.5	90	200	170	234	122	186	2	46	26	40	55	25.34	2101 3100 0320 0000