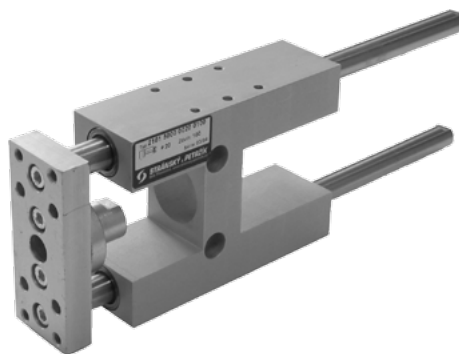




GUIDE UNIT „H“ WITH BALL BEARINGS FOR CYLINDER

• DIN ISO 6432



Supply contains:

- 1 pc guide body
- 1 pc flange
- 2 pcs guide rods
- 1 pc flange for fix to the cylinder

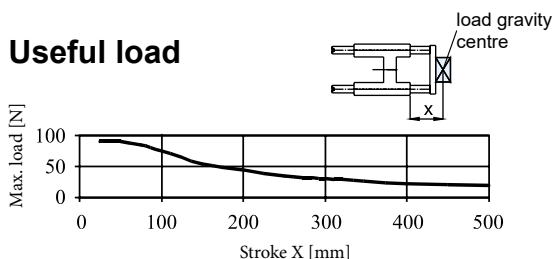
Guide unit can be mounted to any pneumatic cylinder to DIN ISO 6432. Guide secures piston rod against rotation, high torque loads and radial forces. Guide rods are mounted in ball bearings without clearance.

Order codes

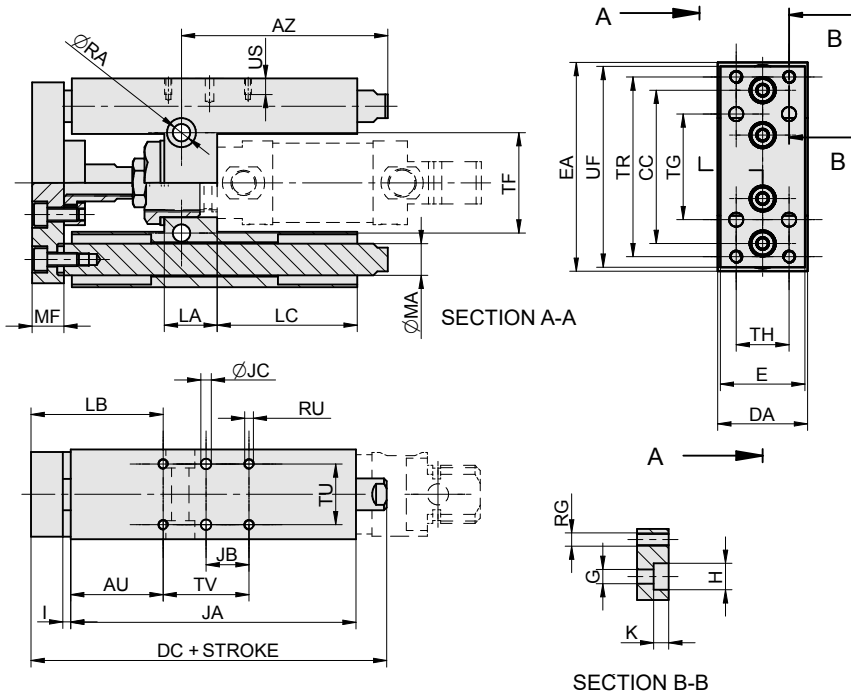
2110 500 00 025 0100

Guide unit H		Options		Piston diameter		Stroke	
2110	for cylinder DIN ISO 6432	00	without options	020	20 mm	xxxx	mm of stroke e.g. 0100 = stroke 100 mm
				025	25 mm		

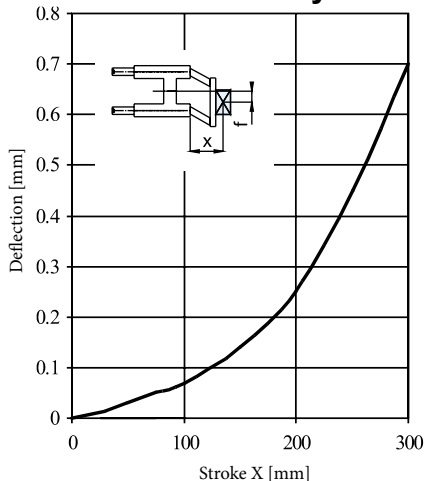
Useful load



Dimensions



Deflection caused by load of 10 N



∅	AU	AZ	CC	DA	DC	E	EA	G	H	I	JA	JB	JC	K	LA	LB
20/25	35	66,5	58	34	135	32	79	5,4	10	3	108	16,25	4	5,7	20	50-60

∅	LC	MA	MF	RA	RG	RU	TR	TF	TG	TH	TU	TV	UF	US
20/25	53	12	12	6,6	M5	M4	68	38	40	20	23	32,5	76	8

Piston diameter [mm]	20	25
Weight 0 mm stroke [kg]	0,86	0,86
Weight add. per 1 mm stroke [kg]	0,002	0,002

Construction / materials

- guide bars: grounded hardened steel bar Cs-53 with hard chrome plated surface
- guide body: aluminium casting
- flange and nut: zinc plated steel
- bearings: covered linear ball bearings