



- ISO 15552, VDMA 24562, NF E 49003.1
- DIN ISO 6431, VDMA 24562, NF E 49003.1
- COMPACT

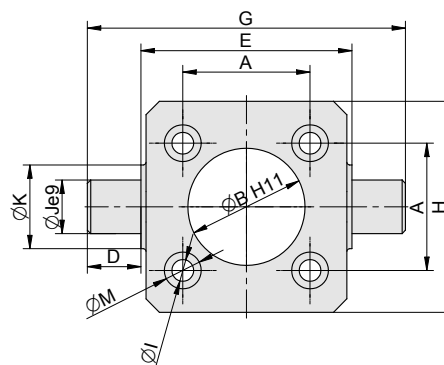
## PIVOT PIN TO FRONT/END CAP FOR CYLINDER

- ISO 15552, VDMA 24562, NF E 49003.1
- DIN ISO 6431, VDMA 24562, NF E 49003.1
- COMPACT

Supply contains:  
1 pc pivot pin  
4 pcs screws



**i** Can be combined with:  
Trunnion mounting  
(page 4-10)



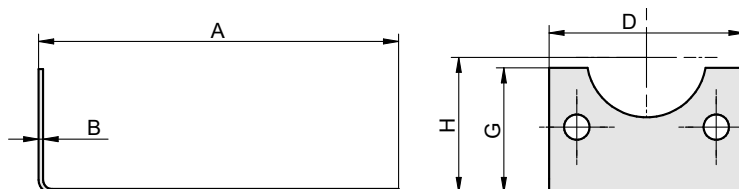
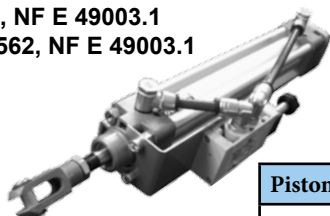
Piston Ø	A	B	D	E	F	G	H	I	J	K	M	N	Weight	Order codes
32	32.5	30	12	50	23	74	50	6.5	12	23	11	14	0.10	2101 4200 0032 0000
40	38	35	16	63	25	95	63	6.5	16	25	11	14	0.20	2101 4200 0040 0000
50	46.5	40	16	75	20	107	65	8.5	16	20	14	12	0.45	2101 4200 0050 0000
63	56.5	45	20	90	25	130	75	8.5	20	25	15	17	0.86	2101 4200 0063 0000
80	72	45	20	110	30	150	95	10.5	20	30	18	23	1.76	2101 4200 0080 0000
100	89	55	25	132	40	182	115	10.5	25	40	18	32	2.83	2101 4200 0100 0000

4

## VALVE BRACKET FOR CYLINDER

- ISO 15552, VDMA 24562, NF E 49003.1
- DIN ISO 6431, VDMA 24562, NF E 49003.1
- COMPACT

Supply contains:  
1 pc bracket  
2 pcs screws



Valve bracket should be fixed on front or rear cap of cylinder. Bracket is universal, it means, that any valve can be attached on it - it is necessary to drill fixing holes in bracket according to the holes in valve. This simple but practical bracket should solve not only the problem with placing of valve in application, but it helps to better look and compact impression of application (it is not necessary to lead and fix tubes for inlet and outlet of cylinder).

Piston Ø	A	B	D	G	H	Weight	Order codes
32	160	1.5	48	30	32	0.11	2101 8000 0032 0000
40	200	1.5	55	32	36	0.15	2101 8000 0040 0000
50	230	1.5	65	41.5	45	0.20	2101 8000 0050 0000
63	230	1.5	75	41.5	50	0.24	2101 8000 0063 0000
80	230	1.5	95	60	63	0.32	2101 8000 0080 0000
100	230	1.5	115	60	71	0.30	2101 8000 0100 0000
125	250	1.5	140	70	90	0.42	2101 8000 0125 0000