

MOUNTING ACCESSORIES FOR CYLINDERS

- ISO 15552, VDMA 24562, NF E 49003.1
- DIN ISO 6431, VDMA 24562, NF E 49003.1
- COMPACT



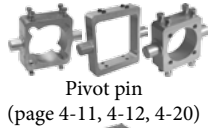
TRUNNION MOUNTING FOR CYLINDER

- ISO 15552, VDMA 24562, NF E 49003.1
- DIN ISO 6431, VDMA 24562, NF E 49003.1
- COMPACT

Supply contains:
1 pc trunnion



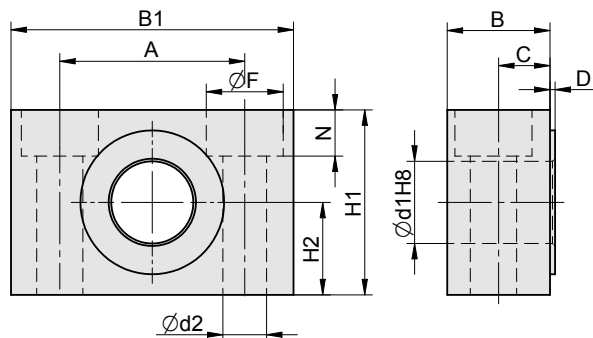
i Can be combined with:



Pivot pin
(page 4-11, 4-12, 4-20)



Pivot pin to front/end cap
(page 4-13)



| Piston Ø | A | B | B1 | C | D | d1 | d2 | F | H1 | H2 | N | Weight | Order codes |
|-----------|-----|------|-----|------|-----|----|-----|----|----|----|------|--------|---------------------|
| 32 | 32 | 17 | 46 | 9.5 | 1 | 12 | 6.5 | 11 | 30 | 15 | 10 | 0.04 | 2101 4000 0032 0000 |
| 40 / 50 | 36 | 20 | 55 | 11 | 1 | 16 | 8.5 | 15 | 36 | 18 | 9 | 0.08 | 2101 4000 0040 0000 |
| 63 / 80 | 42 | 21.5 | 65 | 11.5 | 1.5 | 20 | 11 | 18 | 40 | 20 | 11 | 0.10 | 2101 4000 0063 0000 |
| 100 / 125 | 50 | 27 | 75 | 14.5 | 1.5 | 25 | 14 | 20 | 50 | 25 | 13 | 0.22 | 2101 4000 0100 0000 |
| 160 / 200 | 60 | 38 | 92 | 20.5 | 2 | 32 | 18 | 26 | 60 | 30 | 17.5 | 0.40 | 2101 4000 0160 0000 |
| 250 | 90 | 54 | 140 | 23.5 | 4 | 40 | 22 | 34 | 70 | 35 | 21.5 | 1.08 | 2101 4000 0250 0000 |
| 320 | 100 | 63 | 150 | 28.5 | 4 | 50 | 26 | 40 | 80 | 40 | 26 | 1.35 | 2101 4000 0320 0000 |

TRUNNION MOUNTING FOR CYLINDER

- ISO 15552, VDMA 24562, NF E 49003.1
- DIN ISO 6431, VDMA 24562, NF E 49003.1
- COMPACT

Supply contains:
1 pc trunnion



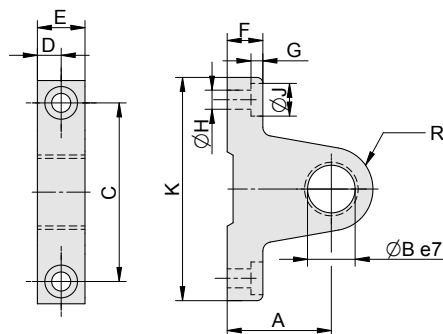
i Can be combined with:



Pivot pin
(page 4-11, 4-12, 4-20)



Pivot pin to front/end cap
(page 4-13)



| Piston Ø | A | B | C | D | E | F | G | H | J | K | R | Weight | Order codes |
|-----------|----|----|----|----|----|----|----|-----|----|-----|----|--------|---------------------|
| 32 | 22 | 12 | 40 | 6 | 12 | 8 | 4 | 5.3 | 10 | 55 | 12 | 0.20 | 2110 4000 0032 0000 |
| 40 / 50 | 35 | 16 | 60 | 8 | 16 | 12 | 4 | 6.4 | 11 | 75 | 14 | 0.22 | 2110 4000 0040 0000 |
| 63 / 80 | 38 | 20 | 71 | 10 | 20 | 14 | 7 | 8.5 | 14 | 90 | 23 | 0.40 | 2110 4000 0063 0000 |
| 100 / 125 | 50 | 25 | 90 | 15 | 30 | 20 | 12 | 13 | 20 | 120 | 25 | 0.86 | 2110 4000 0100 0000 |