

PROPORTIONAL POSITION SENSOR SERIES MPS WITH ANALOG OUTPUT



Proportional position sensor with analog output (current as well as voltage) is suitable for application, where it is necessary to know exact position of the piston. It is a compact sensor, which can be fixed into the T slot. It is a fully electronic sensor, which brings excellent properties, long lifetime and integrated protections. There are several types with various measuring ranges available for various cylinder strokes. If the cylinder stroke is smaller than measuring range, the starting and end position can be adjusted by user on the sensor.

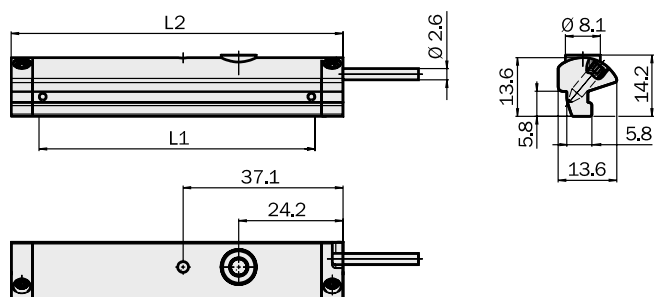
Technical data

Description	Value
Supply voltage U_b [V]	10 to 30 DC, $\pm 10\%$
Continuous current I_a [mA]	25
Max. load resistance, current output [Ω]	500
Min. load resistance, voltage output [k Ω]	2
Temperature range T_a [$^{\circ}$ C]	-20 to +70
Connection	PUR cable 2m or cable 0.3 m with M8x1 connector
Function indicator	LED
Overload and short-circuit protection, reverse polarity protection	

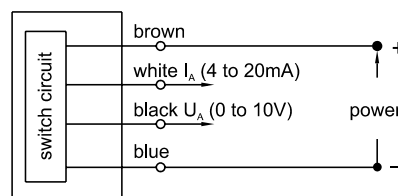
Description	Value
Sample time [ms]	1
Resolution typ. [mm]	0.05
Linearity typ. [mm]	0.3
Repeat accuracy typ. [mm]	0.1
Travel speed max. [m/s]	3
Analog output - current [mA]	4 to 20
- voltage [V]	0 to 10
Enclosure rating	IP 67
EMC	according to EN 60947-5-7
Housing material	PA reinforced

Order codes, dimensions

Type	Measuring range L1 [mm]	L2	Order codes for switch with connection	
			cable 2m	cable 0.3 m with M8x1 connector
MPS	32	45	2210 9011 0010 2032	2210 9011 0015 0032
	64	77	2210 9011 0010 2064	2210 9011 0015 0064
	96	109	2210 9011 0010 2096	2210 9011 0015 0096
	128	141	2210 9011 0010 2128	2210 9011 0015 0128
	160	173	2210 9011 0010 2160	2210 9011 0015 0160
	192	205	2210 9011 0010 2192	2210 9011 0015 0192
	224	237	2210 9011 0010 2224	2210 9011 0015 0224
	256	269	2210 9011 0010 2256	2210 9011 0015 0256



Connection



How to fix switch on cylinder

Pneumatic cylinder type	Switch can be used
	directly
VDMA 24562 with integrated grooves, Compact, ISO 15552 (order code 10201...), short stroke $\varnothing 160$ and 250 mm	✓

Cables with straight M8x1 connector

Description	Order codes
PVC cable with connector 4×0.22 mm ² , length 2m	2291 0020 0000 0000
PVC cable with connector 4×0.22 mm ² , length 5m	2291 0021 0000 0000
PVC cable with connector 4×0.22 mm ² , length 10m	2291 0022 0000 0000