



Tube PU (polyurethan)



Technical data:
Standard tube color is blue.
Temperature range: -20°C to +60°C

With temperature the pressure changes as follows:

-20°C	0°C	20°C	40°C	60°C
180%	140%	100%	70%	50%

Diameter		Min. bending radius	Max. pressure at 20°C [MPa]	Order codes - color					
outside D mm	inside d mm			blue	red	yellow	green	white	black
4	2 (2.5)	13	2.5	3020 0004 0200 0010	3020 0004 0200 0011	3020 0004 0200 0012	3020 0004 0200 0013	3020 0004 0200 0016	3020 0004 0200 0020
6	4	20	1.6	3020 0006 0400 0010	3020 0006 0400 0011	3020 0006 0400 0012	3020 0006 0400 0013	3020 0006 0400 0016	3020 0006 0400 0020
8	6	30	1.1	3020 0008 0600 0010	3020 0008 0600 0011	3020 0008 0600 0012	3020 0008 0600 0013	3020 0008 0600 0016	3020 0008 0600 0020
10	6.5	30	1.0	3020 0010 0600 0010	3020 0010 0600 0011			3020 0010 0600 0016	
10	8	40	0.9	3020 0010 0800 0010	3020 0010 0800 0011			3020 0010 0800 0016	3020 0010 0800 0020
12	8	35	1.2	3020 0012 0800 0010	3020 0012 0800 0011			3020 0012 0800 0016	
12	9	50	1.1	3020 0012 0900 0010	3020 0012 0900 0011			3020 0012 0900 0016	
16	11	55	1.0	3020 0016 1100 0010					

Tube PA6 (polyamide)



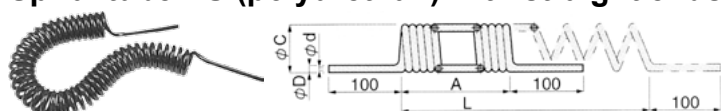
Technical data:
Standard tube color is blue
(black for tube dia. 12/9 and 15/12).
Temperature range: -20°C to +90°C

With temperature the pressure changes as follows:

-20°C	0°C	20°C	40°C	60°C	80°C	90°C
180%	140%	100%	70%	50%	45%	38%

Diameter		Min. bending radius	Max. pressure at 20°C [MPa]	Order codes - color					
outside D mm	inside d mm			blue	red	yellow	green	white	black
4	2	25	4.9	3010 0004 0200 0010	3010 0004 0200 0011	3010 0004 0200 0012	3010 0004 0200 0013	3010 0004 0200 0016	3010 0004 0200 0020
6	4	35	3.0	3010 0006 0400 0010	3010 0006 0400 0011			3010 0006 0400 0016	3010 0006 0400 0020
8	6	45	2.1	3010 0008 0600 0010				3010 0008 0600 0016	3010 0008 0600 0020
10	8	60	1.7	3010 0010 0800 0010	3010 0010 0800 0011			3010 0010 0800 0016	3010 0010 0800 0020
12	9	80	1.9						3010 0012 0900 0020
12	10	70	1.3	3010 0012 1000 0010				3010 0012 1000 0016	
15	12	100	1.5						3010 0015 1200 0020
16	12	150	1.8	3010 0016 1200 0010					

Spiral tube PU (polyurethan) with straight ends



Technical data:
Standard tube color is blue.
Temperature range: -15°C to +60°C
Pressure range: -0,1 to 0,8 MPa at 20°C

A ... length in idle condition
L ... working length
C ... spiral diameter
Values in table are mentioned in mm.

Ø D	Ø d	Ø C	A	L	Order codes
4	2.5	24	120	360	PUML 04 - 2
4	2.5	24	180	540	PUML 04 - 3
4	2.5	24	350	1100	PUML 04 - 5
4	2.5	24	480	1500	PUML 04 - 7
4	2.5	24	700	2100	PUML 04 - 10
4	2.5	24	1040	3200	PUML 04 - 14
4	2.5	24	1450	4400	PUML 04 - 20

Ø D	Ø d	Ø C	A	L	Order codes
6	4	30	160	500	PUML 06 - 2
6	4	30	230	700	PUML 06 - 3
6	4	30	430	1300	PUML 06 - 5
6	4	30	620	1900	PUML 06 - 7
6	4	30	910	2800	PUML 06 - 10
6	4	30	1300	3900	PUML 06 - 14
6	4	30	1850	5600	PUML 06 - 20

Ø D	Ø d	Ø C	A	L	Order codes
8	5	42	250	750	PUML 08 - 3
8	5	42	390	1200	PUML 08 - 5
8	5	42	540	1700	PUML 08 - 7
8	5	42	770	2400	PUML 08 - 10
8	5	42	1045	3200	PUML 08 - 14
8	5	42	1550	4700	PUML 08 - 20

Ø D	Ø d	Ø C	A	L	Order codes
10	6.5	58	330	1000	PUML 10 - 5
10	6.5	58	470	1400	PUML 10 - 7
10	6.5	58	680	2100	PUML 10 - 10
10	6.5	58	970	3000	PUML 10 - 14
10	6.5	58	1380	4200	PUML 10 - 20

Ø D	Ø d	Ø C	A	L	Order codes
12	8	72	310	1000	PUML 12 - 5
12	8	72	450	1400	PUML 12 - 7
12	8	72	660	2000	PUML 12 - 10
12	8	72	920	2800	PUML 12 - 14
12	8	72	1320	4000	PUML 12 - 20

Other tube colors are available on request. Add the code for the desired color at the end of the order code:
-B ... black
-O ... orange
-Y ... yellow
-R ... red
-G ... green
-C ... transparent

i The value of max. operating pressure is measured at 20°C and 65%RH. When tubes are used in different conditions, consider a safety ratio of the pressure with an enough margin.

i When tubes are frequently swung and bent, there is a possibility of generating heat between molecules and damaging the products.

i We recommend to use straight push-on fittings with tube guard for spiral tubes. See page 10-7.





Spiral tube PA6 (polyamide)



Technical data:
 Standard tube color is blue.
 Temperature range: -20°C to +90°C
 Standard packaging: 30 m in unrolled state

With temperature the pressure changes as follows:

-20°C	0°C	20°C	40°C	60°C	80°C	90°C
180%	140%	100%	70%	50%	45%	38%

Outside diameter Ø D mm	Inside diameter Ø D mm	Spiral diameter	Number of turns per 1 m	Max. pressure at 20°C [MPa]	Order codes
6	4	72	5	3,0	3010 1006 0400 0010
8	6	96	3,3	2,1	3010 1008 0600 0010
10	8	120	2,7	1,7	3010 1010 0800 0010
12	10	144	2	1,3	3010 1012 1000 0010

The length of the coil tube is specified in the unrolled state. The working length is maximum 1/2 length (0,3 to 0,4 times recommended) of the unrolled state. The maximum possible length is 30 m in the unrolled state. Tubes can be connected for longer lengths. Example of calculating the tube length: if, for example, a working length of 5 m is required, the ordered length will be $5 / 0,3 =$ approx. 16 m.



We recommend to use straight push-on fittings with tube guard for spiral tubes. See page 10-7.



Tube PE-LD (polyethylene)



Technical data:
 Temperature range: -5°C to +40°C
 The tube is only suitable for low air pressure applications.

Outside diameter Ø D mm	Inside diameter Ø D mm	Min. bending radius	Max. pressure at 20°C [MPa]	Order codes - color	
				transparent	blue
6	4	28	1,7	3070 0006 0400 0015	3070 0006 0400 0010
8	6	40	1,3	3070 0008 0600 0015	3070 0008 0600 0010
10	8	57	0,9	3070 0010 0800 0015	3070 0010 0800 0010
12	9	75	0,7	3070 0012 0900 0015	

Tube PTFE (teflon)



Technical data:
 Standard tube color is transparent.
 Temperature range: -200°C to +250 (200)°C under static (dynamic) using.

With temperature the pressure changes as follows:

20°C	50°C	100°C	150°C	200°C
100%	50%	35%	30%	10%

Outside diameter Ø D mm	Inside diameter Ø D mm	Min. bending radius	Max. pressure at 20°C [MPa]	Order codes
4	2	20	2,5	3030 0004 0200 0015
6	4	40	1,8	3030 0006 0400 0015
8	6	60	1,4	3030 0008 0600 0015
10	8	100	1,2	3030 0010 0800 0015
12	10	120	1,0	3030 0012 1000 0015

Tube EPDM



Technical data:
 Standard tube color is black.
 Temperature range: -40°C to +95°C

Outside diameter Ø D mm	Inside diameter Ø D mm	Min. bending radius	Max. pressure at 20°C [MPa]	Order codes
13	6	72	2,0	3090 0013 0600 0020
15	8	96	2,0	3090 0015 0800 0020
17	10	120	2,0	3090 0017 1000 0020
21	13	156	2,0	3090 0021 1300 0020
24	16	192	2,0	3090 0024 1600 0020
28	19	228	2,0	3090 0028 1900 0020
35	25	300	2,0	3090 0035 2500 0020

Multipurpose flexible tube with high resistance to weathering, many chemicals, higher temperatures and sunlight. It is particularly suitable as a main supply of unlubricated compressed air or for backbone distributions in individual applications. It is also used to supply air to cylinders of larger diameters.



Tube PU polyurethan antistatic



Technical data:
Standard tube color is black.
Temperature range: -30°C to +80°C.
The length in the package is 50 m.

With temperature the pressure changes as follows:

Outside diameter Ø D mm	Inside diameter Ø d mm	Min. bending radius	Max. pressure at 20°C [MPa]	Order codes
4	2,5	9	3,4	PUN 4X2,5 ANTISTAT
6	3,9	15	3,3	PUN 6X4 ANTISTAT
8	5,7	28	2,2	PUN 8X6 ANTISTAT
10	7,5	35	2,2	PUN 10X8 ANTISTAT
12	9	50	2,2	PUN 12X9 ANTISTAT

Ø D	20°C	30°C	40°C	50°C	60°C	70°C	80°C
4	100%	79%	71%	59%	47%	45%	41%
6	100%	82%	73%	61%	48%	42%	36%
8	100%	91%	73%	71%	64%	55%	45%
10	100%	91%	73%	64%	55%	45%	44%
12	100%	73%	68%	54%	55%	41%	40%

Electrically conductive special tubes are used where it is necessary to prevent the formation of a static electric charge. They are used mainly in the production of electronic components, in paint shops, in environments with a risk of explosion, in mining. The tubes are made of polyether polyurethane, are highly antistatic, have a surface resistance of $<10^6 \Omega$ and have very good UV resistance. The tube can also be used for vacuum, while the minimum bending radius must be increased by approx. 20%. If the tube is used in environments with a risk of explosion, it is necessary to observe the conductivity of the entire system, i.e. use metal fittings with metal sealing rings.



Notice

More information such as safety instructions and manufacturer's declaration can be found on our website www.sappv.cz/r/f12e

Metal protective tube



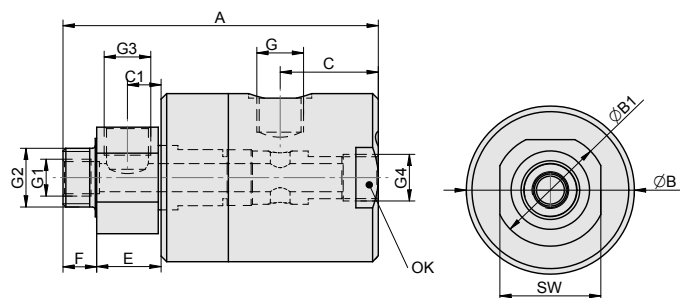
Outside diameter Ø D mm	Inside diameter Ø d mm	Suitable for tube diameter Ø D/d mm	Order codes
10	8	6/4	3080 0006 0000 0000
13	10	8/9	3080 0008 0000 0000
16	13	10/8	3080 0010 0000 0000
19	16	12/10 a 12/9	3080 0012 0000 0000
21	18	15/12	3080 0015 0000 0000

Metal protective tubes are used where external influences could damage the surface of plastic tubes, for example:

- spark protection during welding
- protection against flying chips during machining
- crush protection, etc.

Material: galvanized steel

Rotary coupling



Working pressure	0.6 MPa
Min. pressure	0 MPa
Max. pressure	1.0 MPa
Temperature range	-20°C to +80°C
Working medium	modified compressed air
Cross section	DN 6 for G 1/8", DN 12 for G 3/8"
Working revolutions	0 to 120 rpm, both directions

Materials

- body: dural, hard anodized
- shaft: stainless steel 1.4021
- gaskets: NBR

Type	A	B	B1	C	C1	E	F	G	G1	G2	G3	G4	OK	SW	Weight	Order codes
straight with branch	81.5	45	30	22.5	9.5	18.5	12	G1/8"	M8	G1/4"	G1/8"	G1/8"	—	27	0.35	2770 0300 0600 0001
	109.5	60	40	32	12	23	12	G3/8"	G1/4"	G1/2"	G3/8"	G3/8"	56	36	0.90	2770 0300 1000 0001
elbow with branch	72	45	30	12.5	9.5	18.5	12	G1/8"	M8	G1/4"	G1/8"	—	—	27	0.31	2770 0200 0600 0001
	99.5	60	40	24	12	23	12	G3/8"	G1/4"	G1/2"	G3/8"	—	—	36	0.78	2770 0200 1000 0001
elbow	72	45	30	12.5	—	18.5	12	G1/8"	—	G1/4"	—	—	—	27	0.32	2770 0100 0600 0001
	91.5	60	40	24	—	15	12	G3/8"	—	G1/2"	—	—	—	36	0.83	2770 0100 1000 0001