

DOUBLE ACTING PNEUMATIC CYLINDERS ISO 15552, VDMA 24562



STRÁNSKÝ A PETRŽÍK



Modern design, quality processing and high-quality of used parts - there are characteristics of new cylinders series. Dimensions conforms to the international standards ISO 6431, VDMA 24562 and NF E 49003.1, that is why it can replace pneumatic cylinder, which is made by any producer to these standards. Fully adjustable cushioning at end of stroke and magnet for proximity switches are standard for this series. The proximity switches can be mounted directly to the tube's groove - so no brackets are necessary. The lifetime of cylinders is more than 4000 km at standard conditions.

| | |
|------------------|-------------------------|
| Working pressure | 0,6 MPa |
| Min. pressure | 0,1 MPa |
| Max. pressure | 1,0 MPa |
| Temp. range | -20°C to +80°C |
| Working medium | modified compressed air |

| Piston diameter [mm] | 32 | 40 | 50 | 63 | 80 | 100 | 125 |
|---|-----------|-------|-------|-------|-------|-------|-------|
| Thrust at 0.6 MPa [N] | 482 | 754 | 1178 | 1870 | 3015 | 4713 | 7363 |
| Thrust at 0.6 MPa [N] with double ended piston rod | 415 | 633 | 990 | 1682 | 2720 | 4418 | 6880 |
| Return force at 0.6 MPa [N] | 415 | 633 | 990 | 1682 | 2720 | 4418 | 6880 |
| Connection | G1/8" | G1/4" | G1/4" | G3/8" | G3/8" | G1/2" | G1/2" |
| Length of adjustable cushioning [mm] | 17 | 17 | 17 | 16 | 20 | 18 | 28 |
| Max. stroke [mm] * | 1000* | 1000* | 1000* | 1000* | 1500* | 1500* | 2000* |
| Working speed [mm/s] | 50 to 500 | | | | | | |
| Min. stroke for proximity sensing [mm] | 17 | 21 | 25 | 25 | 25 | 25 | 25 |
| Weight 0 mm stroke [kg] | 0.46 | 0.74 | 1.27 | 1.70 | 2.65 | 3.67 | 5.53 |
| Weight add. per 1 mm stroke [kg] | 0.003 | 0.004 | 0.007 | 0.007 | 0.011 | 0.013 | 0.020 |
| Weight 0 mm stroke [kg] with double ended piston rod | 0.52 | 0.84 | 1.37 | 1.90 | 2.97 | 4.31 | 6.54 |
| Weight add. per 1 mm stroke [kg] with dbl. ended piston rod | 0.004 | 0.006 | 0.009 | 0.009 | 0.015 | 0.017 | 0.026 |

*) Stroke of cylinder may be longer after agreement with our technical dept.

Order codes

10201 60 00 050 0100

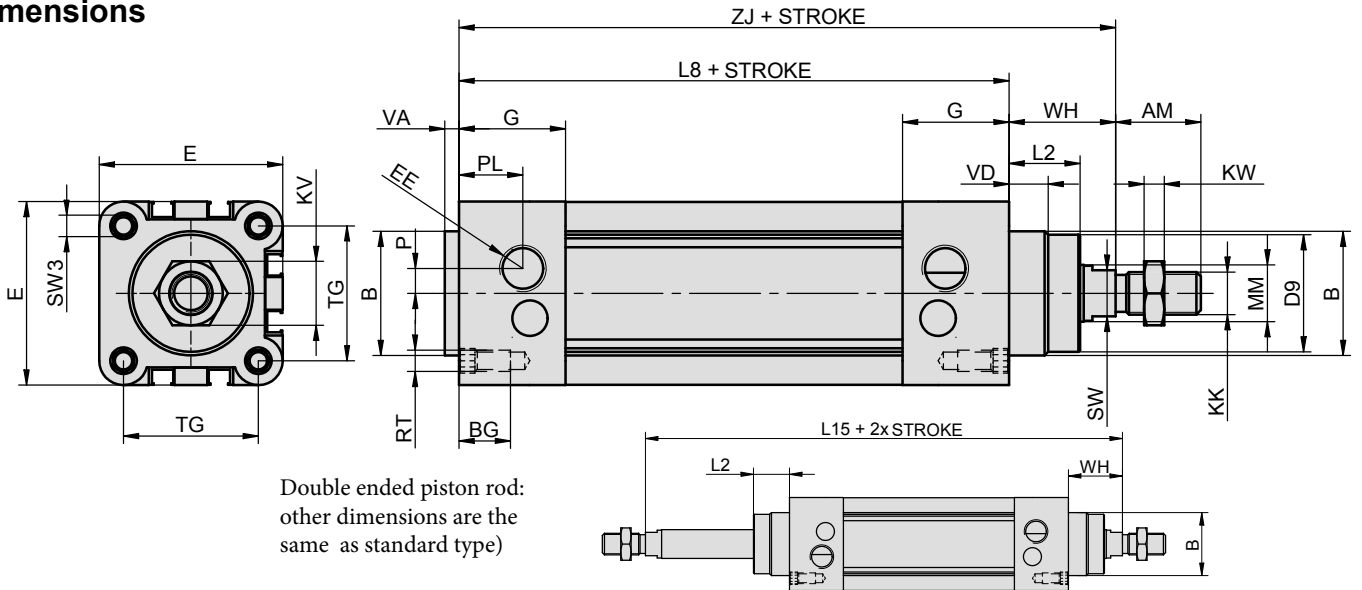
| Type | Equipment | Options | Piston diameter | Stroke / Repair kit |
|--|--|---|---|---|
| 10201 ISO 15552, VDMA 24562, NF E 49003.1, double acting | 60 with cushioning, with magnet 65 with double ended piston rod, with cushioning, with magnet | 00 without options 14 1.4301 stainless steel piston rod 16 steel parts from stainless 1.4301 piston rod stainless 1.4401 28 Viton® piston rod sealing + option 16 43 piston rod seal with higher resistance in dusty environments | 032 32 mm 040 40 mm 050 50 mm 063 63 mm 080 80 mm 100 100 mm 125 125 mm | xxxx mm of stroke e.g.: 0100 = stroke 100 mm 9999 repair kit |

Construction / materials

- caps: aluminium mold casting
- body: drawn dural profile, anodized
- piston rod: grounded round steel bar CK45 with hard chrome plated surface

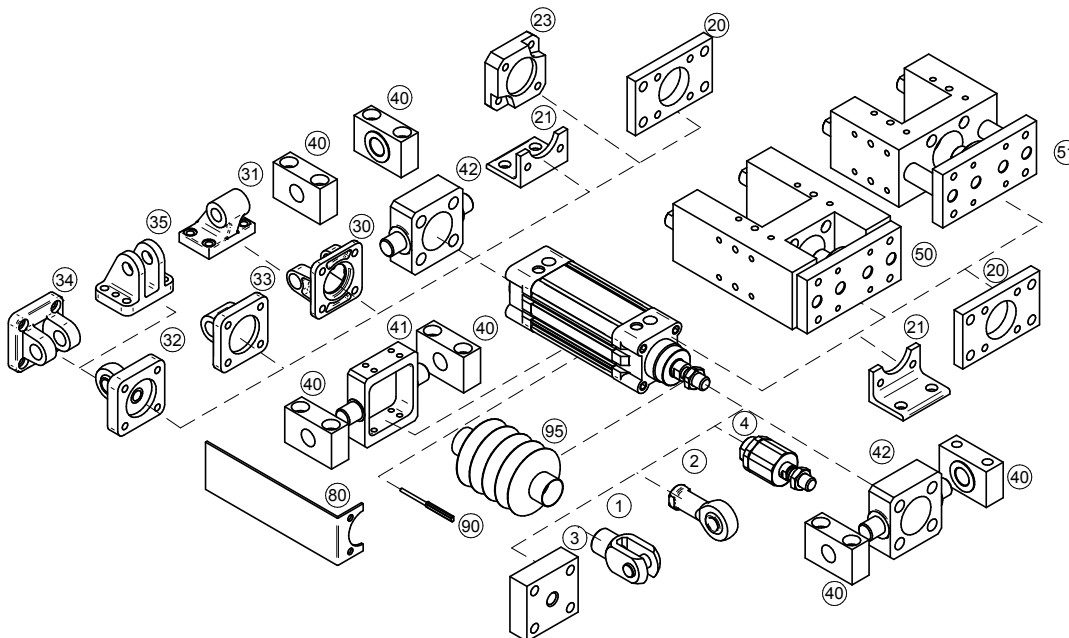
For more options regarding materials or dimensions, please contact our technical dept.

Dimensions



| ∅ | AM | B | BG | D9 | E | EE | G | KK | KV | KW | L2 | L8 | L15 | MM | P | PL | RT | SW | SW3 | TG | VA | VD | WH | ZJ |
|-----|----|----|------|----|-----|-------|----|----------|----|----|------|-----|-----|----|----|----|-----|----|-----|------|----|----|----|-----|
| 32 | 22 | 30 | 16 | 28 | 46 | G1/8" | 25 | M10x1.25 | 17 | 6 | 18 | 94 | 146 | 12 | 5 | 16 | M6 | 10 | 6 | 32.5 | 4 | 10 | 26 | 120 |
| 40 | 24 | 35 | 14.5 | 33 | 52 | G1/4" | 30 | M12x1.25 | 19 | 7 | 21.5 | 105 | 165 | 16 | 6 | 14 | M6 | 13 | 6 | 38 | 4 | 11 | 30 | 135 |
| 50 | 32 | 40 | 17 | 38 | 64 | G1/4" | 30 | M16x1.5 | 24 | 8 | 28 | 106 | 180 | 20 | 7 | 20 | M8 | 16 | 8 | 46.5 | 4 | 11 | 37 | 143 |
| 63 | 32 | 45 | 17 | 38 | 75 | G3/8" | 36 | M16x1.5 | 24 | 8 | 28.5 | 121 | 195 | 20 | 7 | 17 | M8 | 16 | 8 | 56.5 | 4 | 11 | 37 | 158 |
| 80 | 40 | 45 | 17 | 44 | 93 | G3/8" | 36 | M20x1.5 | 30 | 9 | 34.7 | 128 | 220 | 25 | 8 | 28 | M10 | 21 | 10 | 72 | 4 | 11 | 46 | 174 |
| 100 | 40 | 55 | 17 | 44 | 110 | G1/2" | 39 | M20x1.5 | 30 | 9 | 38.2 | 138 | 240 | 25 | 10 | 32 | M10 | 21 | 10 | 89 | 4 | 11 | 51 | 189 |
| 125 | 54 | 60 | 18 | 54 | 135 | G1/2" | 44 | M27x2 | 36 | 11 | 46 | 160 | 290 | 32 | 10 | 30 | M12 | 27 | 12 | 110 | 6 | 11 | 65 | 225 |

Mounting accessories



| Mounting accessories | ... see page |
|--|--------------|
| 1 Piston rod clevis | ... 4-2 |
| 2 Piston rod eye | ... 4-3 |
| 3 Flanged piston rod coupling | ... 4-2 |
| 4 Self-aligning piston rod coupling | ... 4-3 |
| 20 Flange mounting | ... 4-5 |
| 21 Foot mounting | ... 4-5 |
| 23 Boxer flange mounting | ... 4-6 |
| 30 Swivel flange | ... 4-7 |
| 31 Clevis foot mounting | ... 4-7 |
| 32 Swivel flange with spherical bearing | ... 4-8 |
| 33 Swivel flange | ... 4-8 |
| 34 Narrow swivel flange | ... 4-9 |
| 35 Rectangular swivel flange | ... 4-9 |
| 40 Trunnion mounting | ... 4-10 |
| 41 Pivot pin | ... 4-12 |
| 42 Pivot pin to front/end cap | ... 4-13 |
| 50 Guide unit H with ball bearings | ... 4-14 |
| 51 Guide unit with slide bearings | ... 4-16 |
| 80 Valve bracket | ... 4-13 |
| 90 Proximity switch | ... 3-2, 3-4 |
| 90 Proportional position sensor with analog output | ... 3-6 |
| 95 Piston rod protective cover | ... 4-4 |