



This valve is used to pilot high-flow directional control valves connected to machines which have a high risk of injuries to the hands. The machine operator must simultaneously operate, in a safe area, two three-way manual valves for correct operation. The safety valve will ignore a single depression of one of the manual valves. To repeat the cycle both pilot signals must be exhausted and the manual valves simultaneously actuated again.

The two-hand safety valve is sold with **CE**-certification (compliant to Machinery Directives EEC 89/392, 91/368, 93/44, 96/68 and to Norm EN 574, level 1).

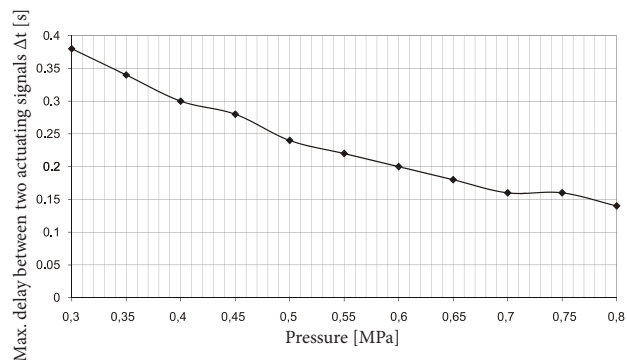
This valve series contains rubber gaskets.

Ports	G1/8"
Flow capacity [Nl/min]	100
Working pressure [MPa]	0.3 to 0.8
Temperature range [°C]	-10 to +60
Max. delay between two actuating signals [s]	0.5
Working medium	modified compressed air
Weight [kg]	0.40

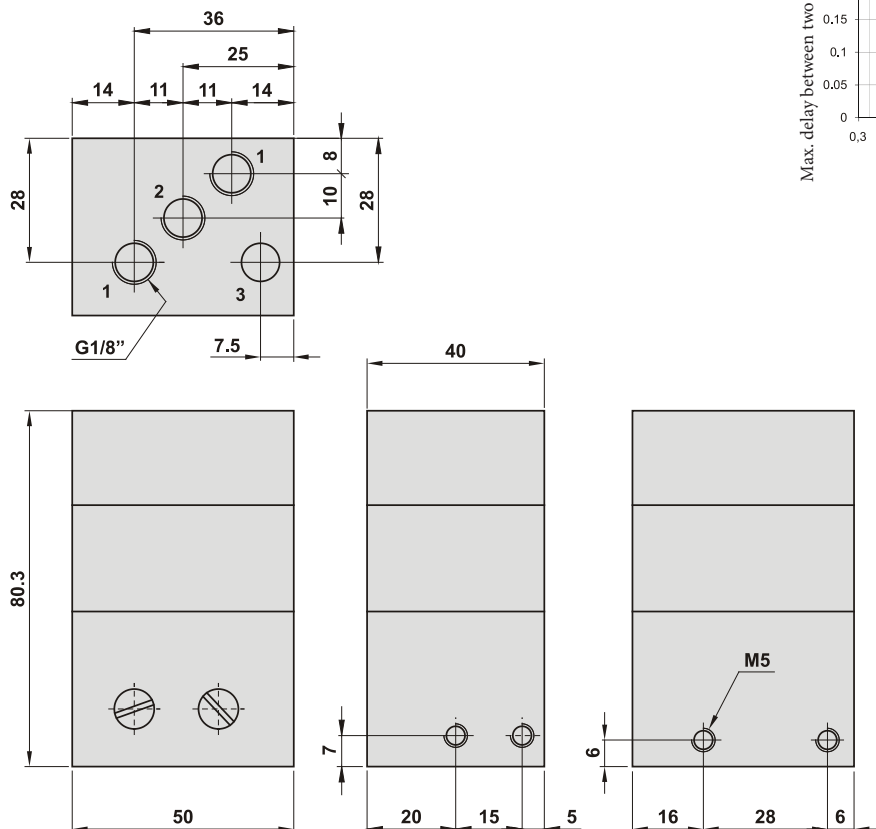
Order codes

Ports	G1/8"
Two hand safety valve	2899 0029 9040 0004

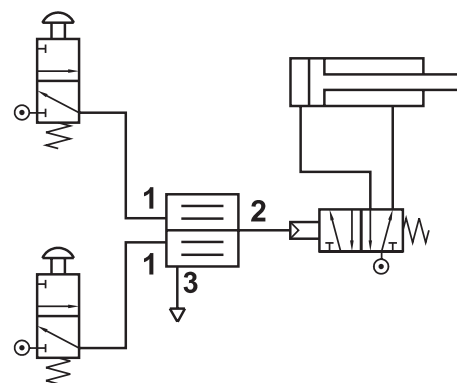
Max. delay between two actuating signals related to the pressure



Dimensions



Connection



Note: M5 threaded holes are for fixing the valve