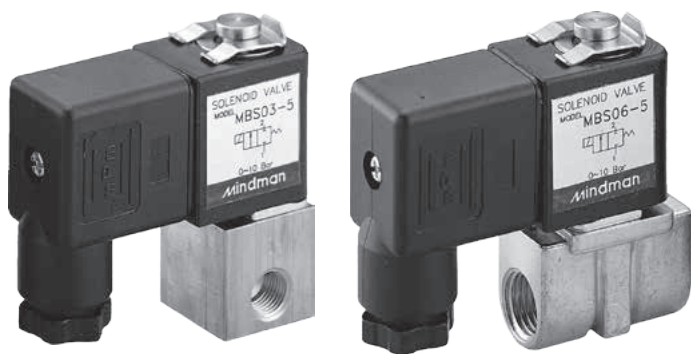


SOLENOID ACTUATED VALVES SERIES MBS



STRÁNSKÝ A PETRŽÍK



Direct solenoid actuated valve 2/2 normally closed with orifice 1 to 2.4 mm. The following sealing are available: NBR, EPDM and viton (teflon on request). Available fluid: air, inert gas, water, vacuum, oil, etc. Coil with Ex approval EExm II T4, or EEx ia II C T6 PTB are available on request.

| Series | MBS | | | | |
|---------------------------------------|--|----------|----------|----------|----------|
| Ports | G1/8", G1/4" | | | | |
| Size | 1 | 2 | 3 | 4 | 5 |
| Flow capacity [Nl/min] | 30 | 50 | 90 | 140 | 180 |
| Working pressure [MPa] for AC voltage | 0 to 4.0 | 0 to 3.5 | 0 to 3.0 | 0 to 2.5 | 0 to 2.0 |
| Working pressure [MPa] for DC voltage | 0 to 3.0 | 0 to 2.4 | 0 to 1.2 | 0 to 1.0 | 0 to 0.7 |
| Power input [W, VA] | 6.8W for DC voltage, 8VA for AC voltage - inrush, 6VA hold | | | | |
| Coil voltage tolerance | ±8% | | | | |
| Temperature range [°C] | ambient temperature -15 to +50, medium temperature -5 to +80 for NBR sealing, , -10 to +120 for EPDM and viton sealing | | | | |
| Enclosure | IP65 with sealed and fastened connector | | | | |
| Installing position | free, coil upright is recommended | | | | |
| Housing material | brass | | | | |

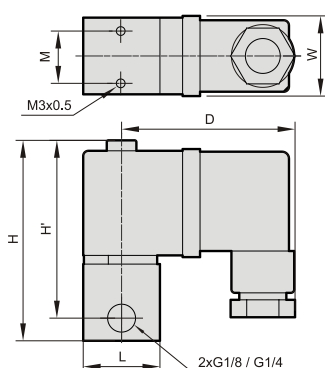
Order codes

P MBS 03 2 N 3 D D24

| Series | Thread | Size | Sealing | Connector | Voltage |
|--------------------------------------|----------------------|--|----------------------------|---------------------|--|
| MBS 2/2 normally closed | 03 G1/8" 06 G1/4" | 1 flow cap. 30 Nl/min 2 flow cap. 50 Nl/min 3 flow cap. 90 Nl/min 4 flow cap. 140 Nl/min 5 flow cap. 180 Nl/min | N NBR J EPDM V Viton | standard D s LED | D12 12 V DC D24 24 V DC A220 230 V AC 50-60 Hz A24 24 V AC 50-60 Hz |

i Supply contains connector.

Dimensions



| Ports thread | D | H | H' | L | M | W | Weight [kg] |
|--------------|----|----|----|-----|------|----|-------------|
| G1/8" | 50 | 57 | 51 | □22 | 15 | 23 | 0.15 |
| G1/4" | 50 | 61 | 51 | 33 | 11.2 | 23 | 0.15 |