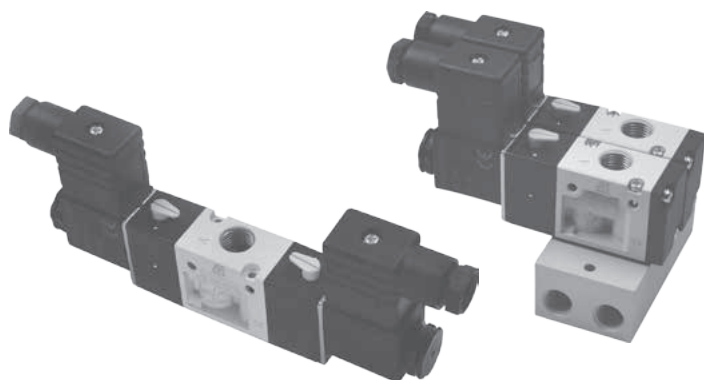


SOLENOID ACTUATED VALVES SERIES MVSC



STRÁNSKÝ A PETRŽÍK



The valve series, which replaces valves series K. The basic usable features are kept and brings some improvements such as lower wattage, comparable or bigger flow capacity and better accessibility. Valves are solenoid pilot actuated. The product range covers functions 3/2 normally closed, opened and double solenoid. Connector and coil are included in delivery.

This valve series contains rubber gaskets.

| Series | MVSC 220 | MVSC 300 | MVSC 460 |
|------------------------|---|----------|----------|
| Ports | G1/4" | G3/8" | G1/2" |
| Flow capacity [Nl/min] | 980 | 1905 | 2730 |
| Working pressure [MPa] | 0.2 to 0.8 | | |
| Power input [W, VA] | 2.5W for DC voltage, 6/4.9VA for AC voltage (inrush/hold) | | |
| Response time [ms] | 30 | 50 | 50 |
| Coil voltage tolerance | ±10% | | |
| Temperature range [°C] | ambient temperature -5 to +50 | | |
| Enclosure | IP65 with sealed and fastened connector | | |

Order codes

PMVSC 220 3E1C A220

| Size | |
|------|-------------------------------|
| 220 | series MVSC 220, thread G1/4" |
| 300 | series MVSC 300, thread G3/8" |
| 460 | series MVSC 460, thread G1/2" |

| Function | | |
|----------|--|-----------------------------|
| 3E1C | | 3/2 normally closed |
| 3E1O | | 3/2 normally opened |
| 3E2 | | 3/2 bistable (with 2 coils) |

| Voltage | |
|---------|--------------------------|
| D12 | 12 V DC ± 10% |
| D24 | 24 V DC ± 10% |
| A220 | 230 V AC ± 10%, 50-60 Hz |
| A24 | 24 V AC ± 10%, 50-60 Hz |

i Supply contains connector(s).

Order codes of manifolds

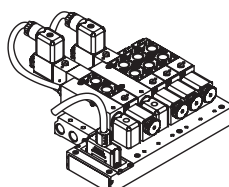
PMVS C220 - 3B 4

| Size | |
|------|--|
| C220 | series MVSC and MVAA 220, thread G1/4" |
| C300 | series MVSC 300, thread G3/8" |
| C460 | series MVSC and MVAA 460, thread G1/2" |

| Number of positions | |
|---------------------|--------------------|
| 2 to 10 | for 2 to 10 valves |

It is possible to mount series MVSC and MVAA valves on manifold with predefined number of position. It isn't possible to add another position to created assembly - it could be necessary to replace manifold or create another manifold. If there is possibility that more valves will be needed in future, we recommend to use manifold with more positions and use blocking plates for unused positions. Valves are mounted to manifold directly - no adaptor is necessary. Valves mounted on manifold could be unmounted separately by unscrew of 2 bolts, which are accessible from top side (side with ports 2 and 4 of valves). Each separate coil must be wired with separate electrical cable.

i Manifolds with internal wiring and common 25-pin SUB-D connector are also available. These manifolds are for valves series 220 and 300. Number of stations is 3 to 12 as standard, maximum is 20. Voltage of coils is 24V DC. For more information about these manifolds, please contact our technical department.

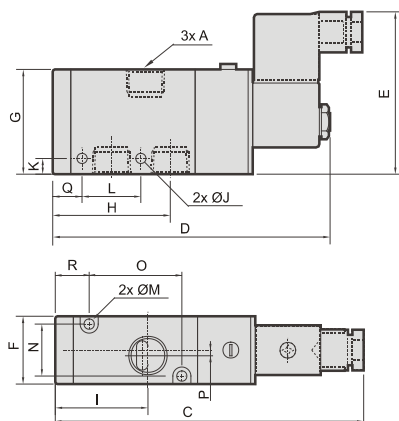


Order codes for blank station plates:

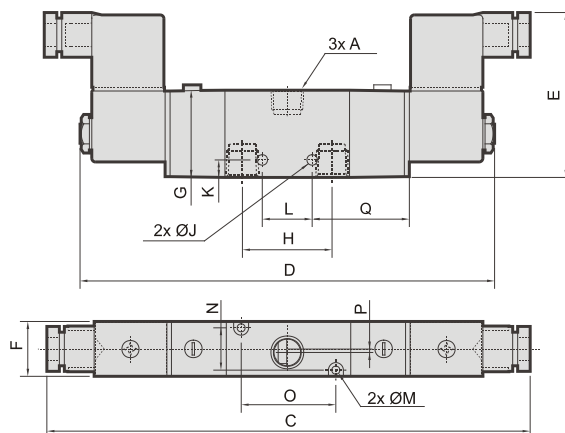
| Series | Order codes |
|--------|---------------|
| 220 | PMVSC 220 -3P |
| 300 | PMVSC 300 -3P |
| 460 | PVMSC 460 -3P |

Dimensions of valve series MVSC

Type 3/2 NC and NO:



Type 3/2 with 2 coils:

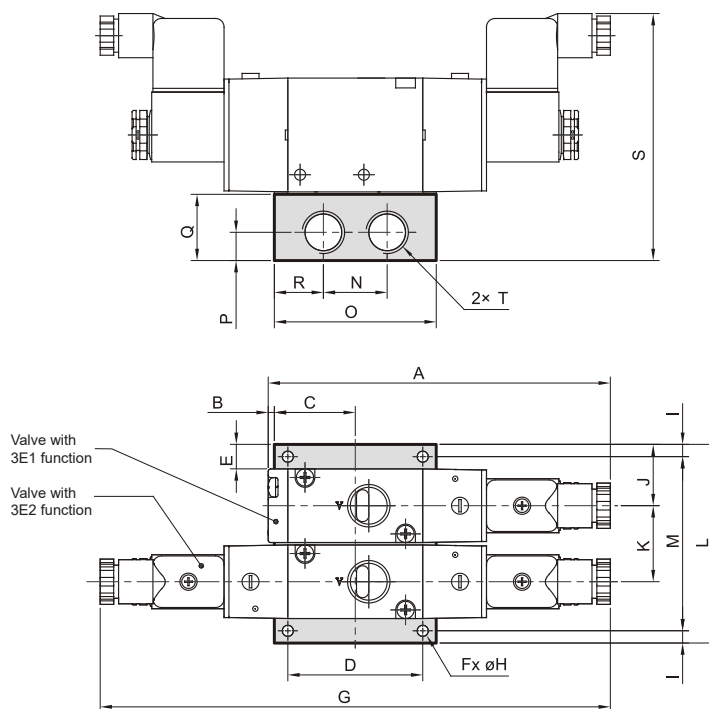


| Series | Function | A | C | D | E | F | G | H | I | J | K | L | M | N | O | P | Q | R | Weight [kg] |
|--------|----------|-------|-------|-------|----|------|------|----|------|-----|------|----|-----|----|----|-----|------|------|-------------|
| 220 | 3E1 | G1/4" | 120 | 105.5 | 67 | 22.3 | 35 | 35 | 26 | 4.2 | 26.5 | 25 | 3.2 | 17 | 25 | 2 | 13.5 | 13.5 | 0.20 |
| | 3E2 | G1/4" | 188 | 159 | 68 | 22.3 | 35 | 18 | — | 4.2 | 26.5 | 25 | 3.2 | 17 | 25 | 2 | 30.5 | — | 0.30 |
| 300 | 3E1 | G3/8" | 139.5 | 126.5 | 73 | 30 | 46.4 | 52 | 41 | 4.5 | 9 | 26 | 4.5 | 23 | 41 | 0 | 13 | 15 | 0.35 |
| | 3E2 | G3/8" | 208 | 182 | 73 | 30 | 46.4 | 26 | — | 4.5 | 9 | 26 | 4.5 | 23 | 41 | 0 | 50 | — | 0.44 |
| 460 | 3E1 | G1/2" | 146 | 133 | 73 | 30 | 46.4 | 56 | 40.5 | 4.5 | 9 | 29 | 4.2 | 23 | 48 | 2.3 | 12.5 | 15 | 0.35 |
| | 3E2 | G1/2" | 214 | 188 | 73 | 30 | 46.4 | 29 | — | 4.5 | 9 | 29 | 4.2 | 23 | 48 | 2.3 | 54.5 | — | 0.44 |

5

Dimensions of manifold assemblies of valves series MVSC and MVAA

| Series | Value | Number of positions | | | | | | | | |
|--------|-------------|---------------------|------|------|------|------|------|------|------|------|
| | | 2 | 3 | 4 | 5 | 6 | 7 | 8 | 9 | 10 |
| 220 | L | 77 | 100 | 123 | 146 | 169 | 192 | 215 | 238 | 261 |
| | M | 65 | 88 | 111 | 134 | 157 | 180 | 203 | 226 | 249 |
| | Weight [kg] | 0.20 | 0.26 | 0.32 | 0.38 | 0.44 | 0.50 | 0.56 | 0.63 | 0.69 |
| 300 | L | 81 | 112 | 143 | 174 | 205 | 236 | 267 | 298 | 329 |
| | M | 71 | 102 | 133 | 164 | 195 | 226 | 257 | 288 | 319 |
| | Weight [kg] | 0.31 | 0.43 | 0.55 | 0.66 | 0.78 | 0.90 | 1.02 | 1.14 | 1.26 |
| 460 | L | 81 | 112 | 143 | 174 | 205 | 236 | 267 | 298 | 329 |
| | M | 71 | 102 | 133 | 164 | 195 | 226 | 257 | 288 | 319 |
| | Weight [kg] | 0.36 | 0.50 | 0.65 | 0.79 | 0.93 | 1.07 | 1.20 | 1.36 | 1.50 |



Spare coils for series 220/300/460

| Order codes | Voltage | Power input |
|-----------------|---------------|-------------|
| PMVSC220-COD12 | 12V DC | 3.1 W |
| PMVSC220-COD24 | 24V DC | 2.5 W |
| PMVSC220-COA24 | 24V 50-60 Hz | 5.8 VA |
| PMVSC220-COA110 | 110V 50-60 Hz | 4.9 VA |
| PMVSC220-COA220 | 230V 50-60 Hz | 5.0 VA |

| Series | A | B | C | D | E | F | G | H | I | J | K | N | O | P | Q | R | S | T |
|--------|-------|-----|----|----|------|---|-----|-----|---|----|----|----|----|------|----|----|-----|-------|
| 220 | 120 | 5 | 21 | 0 | 15.5 | 2 | 188 | 4.5 | 6 | 27 | 23 | 22 | 42 | 10 | 28 | 10 | 96 | G1/4" |
| 300 | 139.5 | 2.5 | 33 | 55 | 10 | 4 | 208 | 4.5 | 5 | 25 | 31 | 26 | 66 | 11.5 | 27 | 20 | 101 | G3/8" |
| 460 | 146 | 3 | 36 | 60 | 10 | 4 | 214 | 4.5 | 5 | 25 | 31 | 30 | 72 | 15 | 32 | 21 | 106 | G1/2" |