



Tube PU polyurethan antistatic



Technical data:
Standard tube color is black.
Temperature range: -30°C to +80°C.
The length in the package is 50 m.

Outside diameter Ø D mm	Inside diameter Ø d mm	Min. bending radius	Max. pressure at 20°C [MPa]	Order codes
4	2,5	9	3,4	PUN 4X2,5 ANTISTAT
6	3,9	15	3,3	PUN 6X4 ANTISTAT
8	5,7	28	2,2	PUN 8X6 ANTISTAT
10	7,5	35	2,2	PUN 10X8 ANTISTAT
12	9	50	2,2	PUN 12X9 ANTISTAT

With temperature the pressure changes as follows:

Ø D	20°C	30°C	40°C	50°C	60°C	70°C	80°C
4	100%	79%	71%	59%	47%	45%	41%
6	100%	82%	73%	61%	48%	42%	36%
8	100%	91%	73%	71%	64%	55%	45%
10	100%	91%	73%	64%	55%	45%	44%
12	100%	73%	68%	54%	55%	41%	40%

Electrically conductive special tubes are used where it is necessary to prevent the formation of a static electric charge. They are used mainly in the production of electronic components, in paint shops, in environments with a risk of explosion, in mining. The tubes are made of polyether polyurethane, are highly antistatic, have a surface resistance of <10⁶Ω and have very good UV resistance. The tube can also be used for vacuum, while the minimum bending radius must be increased by approx. 20%. If the tube is used in environments with a risk of explosion, it is necessary to observe the conductivity of the entire system, i.e. use metal fittings with metal sealing rings.



Notice

More information such as safety instructions and manufacturer's declaration can be found on our website www.sappv.cz/r/f12e

Metal protective tube



Outside diameter Ø D mm	Inside diameter Ø d mm	Suitable for tube diameter Ø D/d mm	Order codes
10	8	6/4	3080 0006 0000 0000
13	10	8/9	3080 0008 0000 0000
16	13	10/8	3080 0010 0000 0000
19	16	12/10 a 12/9	3080 0012 0000 0000
21	18	15/12	3080 0015 0000 0000

Metal protective tubes are used where external influences could damage the surface of plastic tubes, for example:

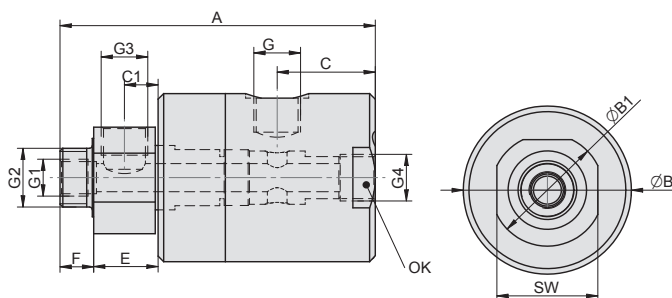
- spark protection during welding
- protection against flying chips during machining
- crush protection, etc.

Material: galvanized steel

Rotary coupling



Working pressure	0.6 MPa
Min. pressure	0 MPa
Max. pressure	1.0 MPa
Temperature range	-20°C to +80°C
Working medium	modified compressed air
Cross section	DN 6 for G 1/8", DN 12 for G 3/8"
Working revolutions	0 to 120 rpm, both directions



Materials

- body: dural, hard anodized
- shaft: stainless steel 1.4021
- gaskets: NBR

Type	A	B	B1	C	C1	E	F	G	G1	G2	G3	G4	OK	SW	Weight	Order codes
straight with branch	81.5	45	30	22.5	9.5	18.5	12	G1/8"	M8	G1/4"	G1/8"	G1/8"	—	27	0.35	2770 0300 0600 0001
	109.5	60	40	32	12	23	12	G3/8"	G1/4"	G1/2"	G3/8"	G3/8"	56	36	0.90	2770 0300 1000 0001
elbow with branch	72	45	30	12.5	9.5	18.5	12	G1/8"	M8	G1/4"	G1/8"	—	—	27	0.31	2770 0200 0600 0001
	99.5	60	40	24	12	23	12	G3/8"	G1/4"	G1/2"	G3/8"	—	—	36	0.78	2770 0200 1000 0001
elbow	72	45	30	12.5	—	18.5	12	G1/8"	—	G1/4"	—	—	—	27	0.32	2770 0100 0600 0001
	91.5	60	40	24	—	15	12	G3/8"	—	G1/2"	—	—	—	36	0.83	2770 0100 1000 0001