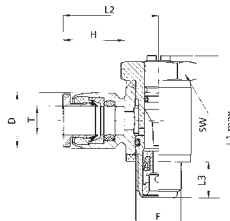
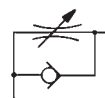


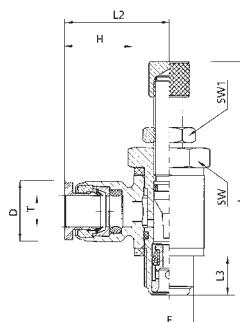
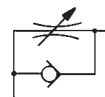
## Unidirectional flow control valve - push-in, for cylinder use, for screw driver setting

Order codes	T - For tube	F - Thread	D	H	L1 max.	L2	L3	SW
N135C-004-005	4 / 2	M5	10	12.5	24.5	19	5.5	8
N135C-004-000	4 / 2	G1/8 <sup>c</sup>	10	12.5	30	20.2	7	14
N135C-006-005	6 / 4	M5	12	13	24.5	20.6	5.5	8
N135C-006-000	6 / 4	G1/8 <sup>c</sup>	12	13.5	30	20.6	7	14
N135C-006-001	6 / 4	G1/4 <sup>c</sup>	12	13.5	36.5	22.6	9	17
N135C-008-000	8 / 6	G1/8 <sup>c</sup>	15	16	30	23.8	7	14
N135C-008-001	8 / 6	G1/4 <sup>c</sup>	15	16	35.6	25.8	9	17
N135C-008-002	8 / 6	G3/8 <sup>c</sup>	15	16	41	30	9	19
N135C-010-001	10 / 8	G1/4 <sup>c</sup>	18	17	36.5	27.1	9	17
N135C-010-002	10 / 8	G3/8 <sup>c</sup>	18	17	41	31	9	19
N135C-012-001	12 / 10	G1/4 <sup>c</sup>	20	19	36.5	31.5	9	17



## Unidirectional flow control valve - push-in, for cylinder use, with control knob setting

Order codes	T - For tube	F - Thread	D	H	L max.	L2	L3	SW	SW1
N136C-004-005	4 / 2	M5	10	12.5	35	19	5.5	8	6
N136C-004-000	4 / 2	G1/8 <sup>c</sup>	10	12.5	45	20.2	7	14	9
N136C-006-005	6 / 4	M5	12	13	35	20.6	5.5	8	6
N136C-006-000	6 / 4	G1/8 <sup>c</sup>	12	13.5	45	20.6	7	14	9
N136C-006-001	6 / 4	G1/4 <sup>c</sup>	12	13.5	52	22.6	9	17	9
N136C-008-000	8 / 6	G1/8 <sup>c</sup>	15	16	45	23.8	7	14	9
N136C-008-001	8 / 6	G1/4 <sup>c</sup>	15	16	52	25.8	9	17	9
N136C-008-002	8 / 6	G3/8 <sup>c</sup>	15	16	58	30	9	19	11
N136C-010-001	10 / 8	G1/4 <sup>c</sup>	18	17	52	27.1	9	17	9
N136C-010-002	10 / 8	G3/8 <sup>c</sup>	18	17	58	31	9	19	11
N136C-012-001	12 / 10	G1/4 <sup>c</sup>	20	19	52	31.5	9	17	9



Working pressure	0.2 to 1.0 MPa
Temperature range	-20°C to +80°C
Working medium	modified compressed air

### Flow capacity

